



TRÉPION SERENIQUE
RESIDENCES

Serene. Unique. Yours.

FAKHRUDDIN
PROPERTIES



TRÉPPAN LIVING®
BRANDED RESIDENCES



Disclaimer: All information, sizes, floor plans, building views, apartment views, layouts, interiors, visuals and details are for illustrative purposes only and are subject to change without prior notice.

DUBAI ISLANDS

Ground Floor + 2 Podium Floors + Twin Towers of 12 Floors

2 bedroom & 3 bedroom Apartments

|

53 Amenities spread over 3 floors



FAKHRUDDIN
PROPERTIES

**TREPPAN
SERENIQUE**
RESIDENCES



DUBAI ISLANDS

Al Mamzar Beach Park

**TREPPAN
SERENIQUE**
RESIDENCES



FAKHRUDDIN
PROPERTIES

Pristine Private School Main Campus

Waterfront Market

The Elite English School

Dubai Hospital

The Apple International School Primary Campus

Hyatt Regency

Canadian Specialist Hospital

CRUISE TERMINAL

Infinity Bridge

Gold Souk

Al Ghurair Centre

DEIRA

Deira City Centre

BURJUMAN


DUBAI INTERNATIONAL AIRPORT


Dubai Frame

DUBAI CREEK

Jumeirah

LOCATION HIGHLIGHTS

90 seconds to the Beach | 2 mins to Beach Cafes, Watersports & Adventure Activities | 2 mins to Beachfront Resorts
5 mins to Golf Course | 7 mins to Marina | 20 mins to Dubai International Airport
23 mins to Dubai Downtown | 25 mins to Business Bay

Disclaimer: All information, sizes, floor plans, building views, apartment views, layouts, interiors, visuals and details are for illustrative purposes only and are subject to change without prior notice.



PROJECT DETAILS



KEY HIGHLIGHTS

Hi-Tech Biohacking Amenities

Resort Like Lifestyle with 53 Amenities

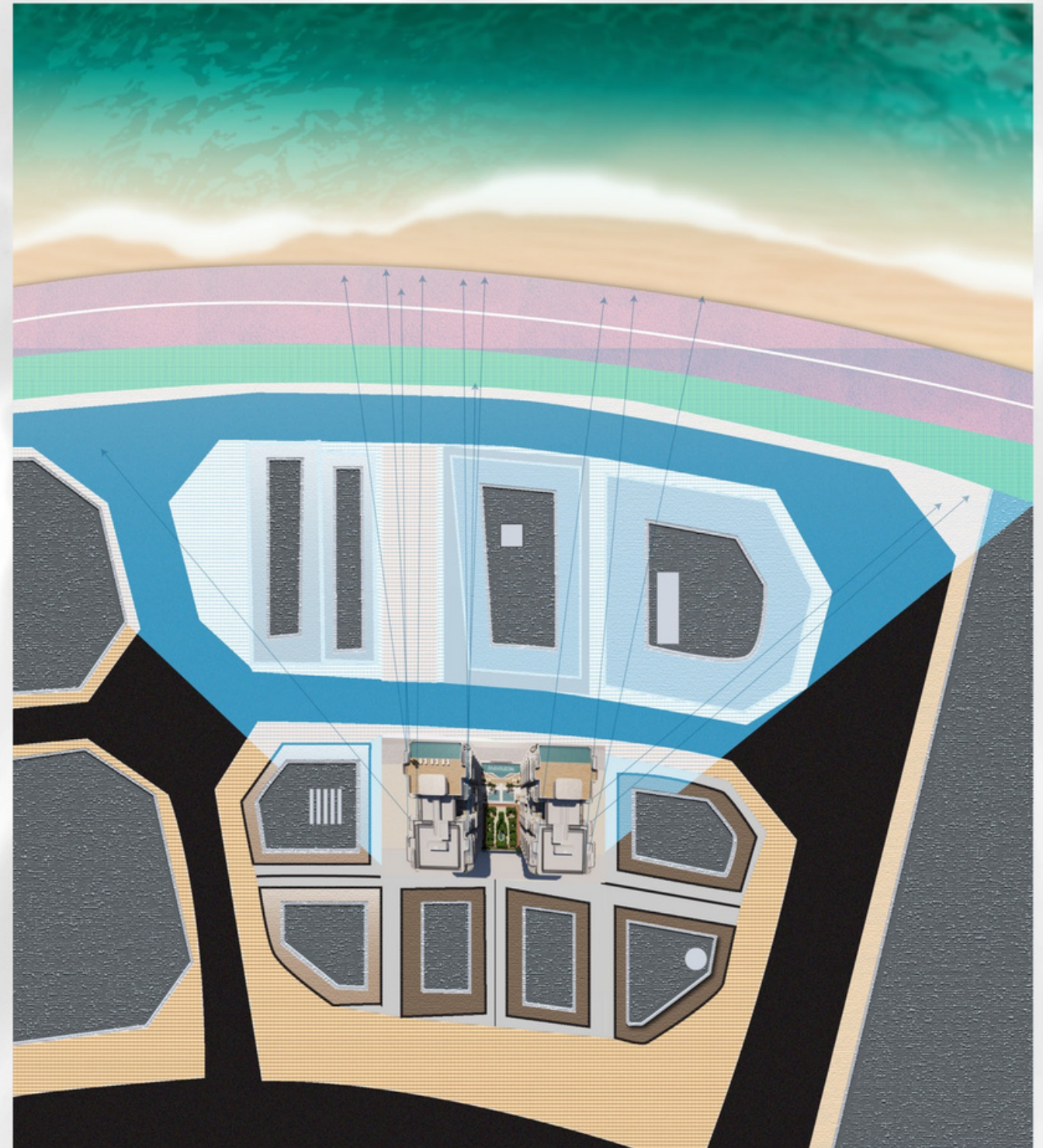
Seaview & Golf Course View Apartments

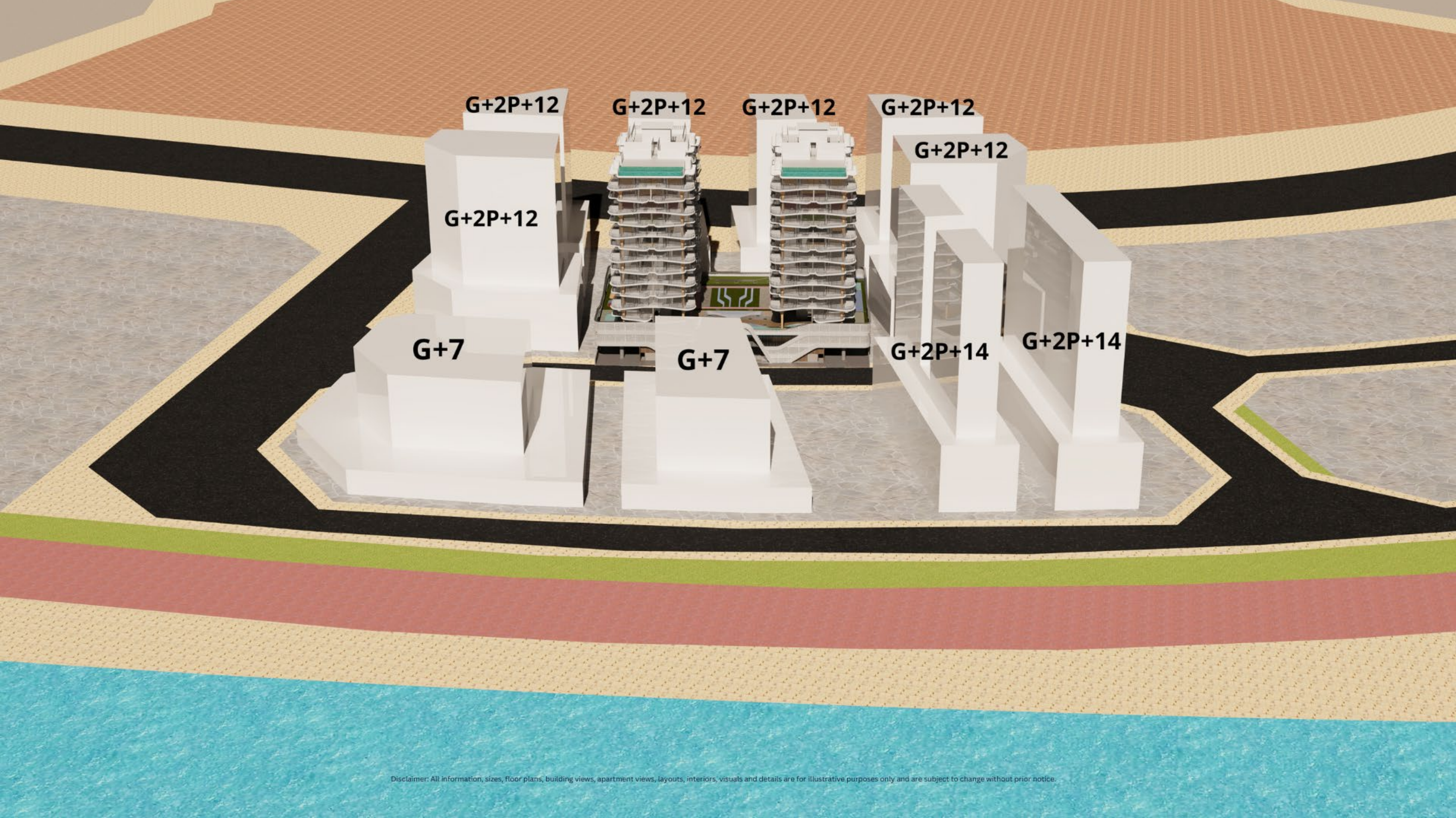
Treppan Living Features

Rooftop Infinity Pool with Seaview &
Golf Course View

SENSATIONAL SEAVIEWS

FOR ALL RESIDENTS





G+2P+12

G+2P+12

G+2P+12

G+2P+12

G+2P+12

G+2P+12

G+7

G+7

G+2P+14

G+2P+14

UNIT MIX

164 UNITS

2 BEDROOM APARTMENTS

6 Types | 70 Units in each Tower - Total 140 Units

Open Seaview from 6th Floor Onwards | Corner units with jacuzzi

3 BEDROOM

4 Types | 12 Units in each Tower - Total 24 Units

Uninterrupted Seaview & Golf View | Corner units with jacuzzi

2 BEDROOMS APARTMENTS

Sizes

980 to 1483 sqft | 1st to 9th Floor | Seaview & Golf Course View
from 6th to 9th floor | Corner Units with Jacuzzi

FLOORS: 2, 4, 6, & 8

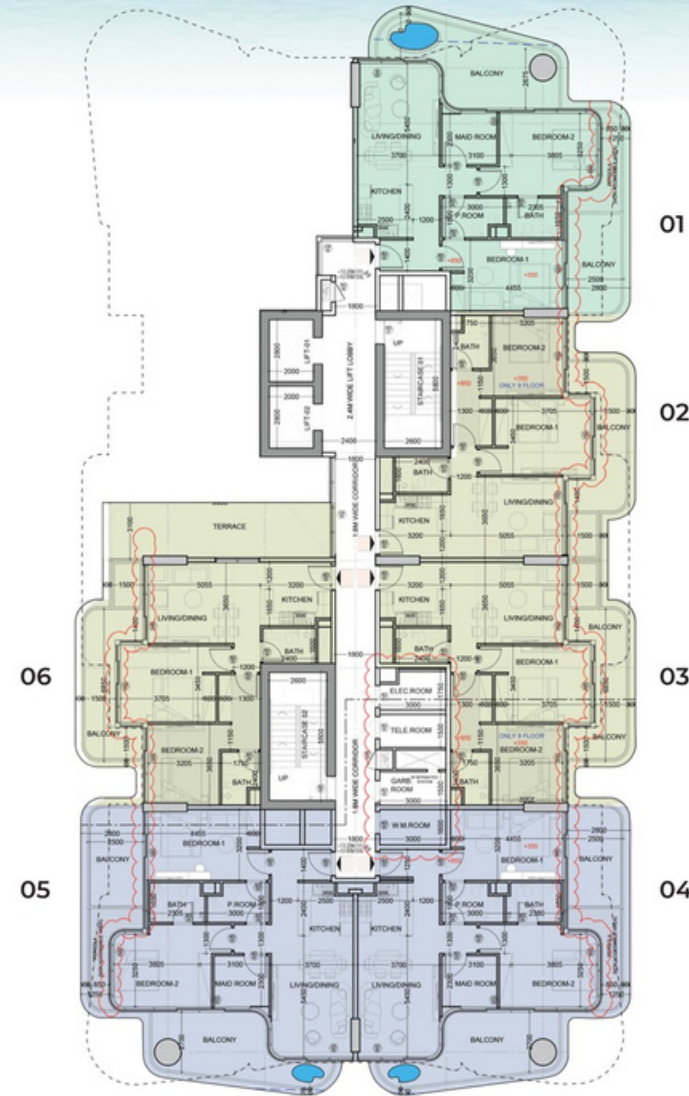
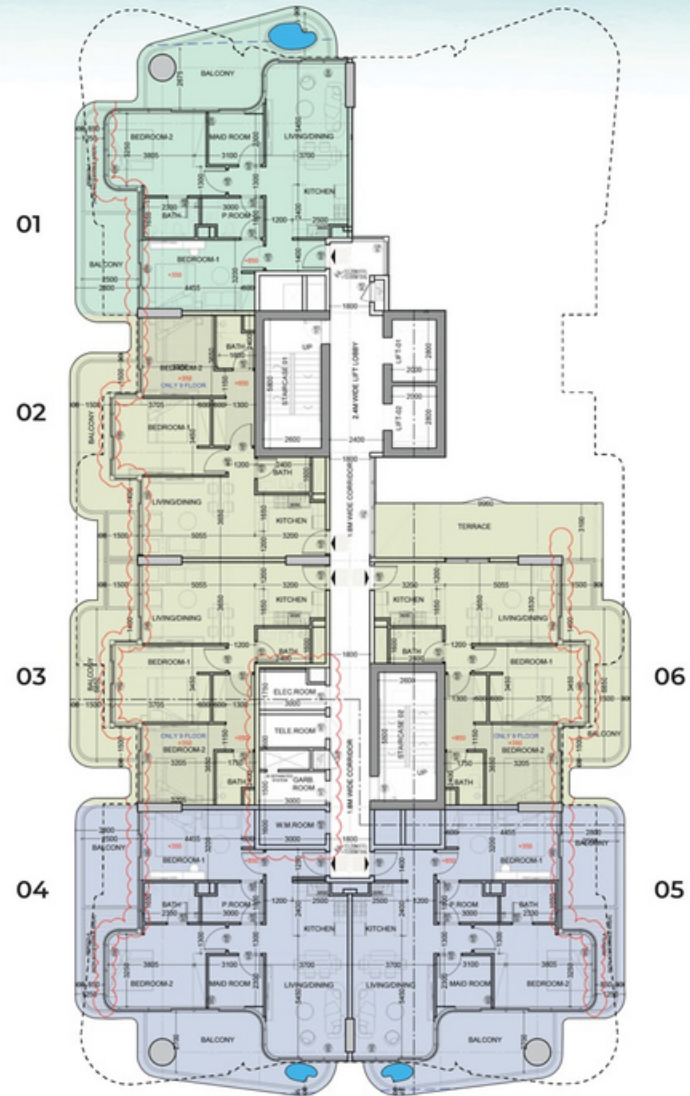
TYPE A : Size: 1483 sq ft | **TYPE C** : Size: 1414 sq ft | **Type F** : Size: 980 sq ft

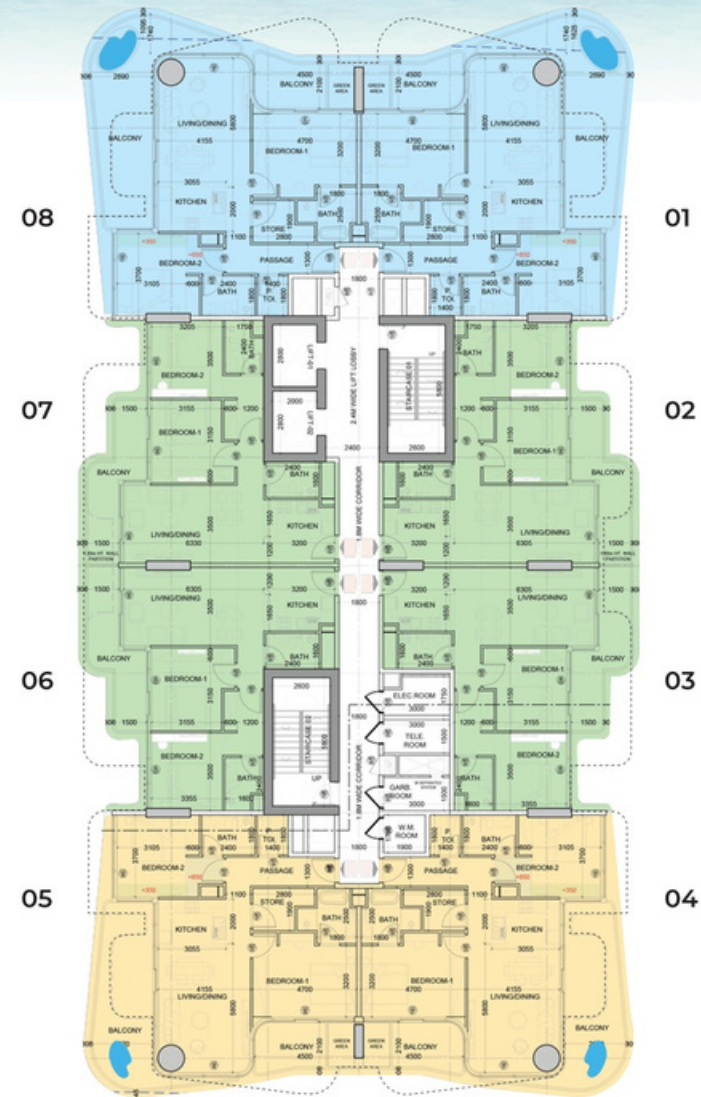
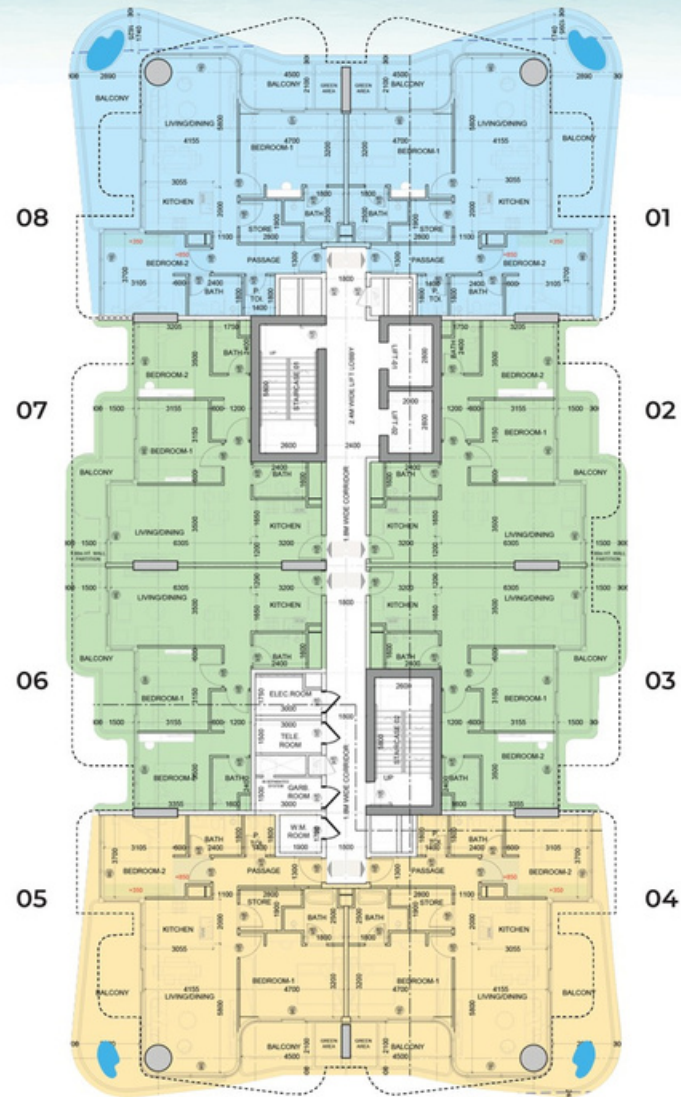
FLOORS: 1, 3, 5, 7 & 9

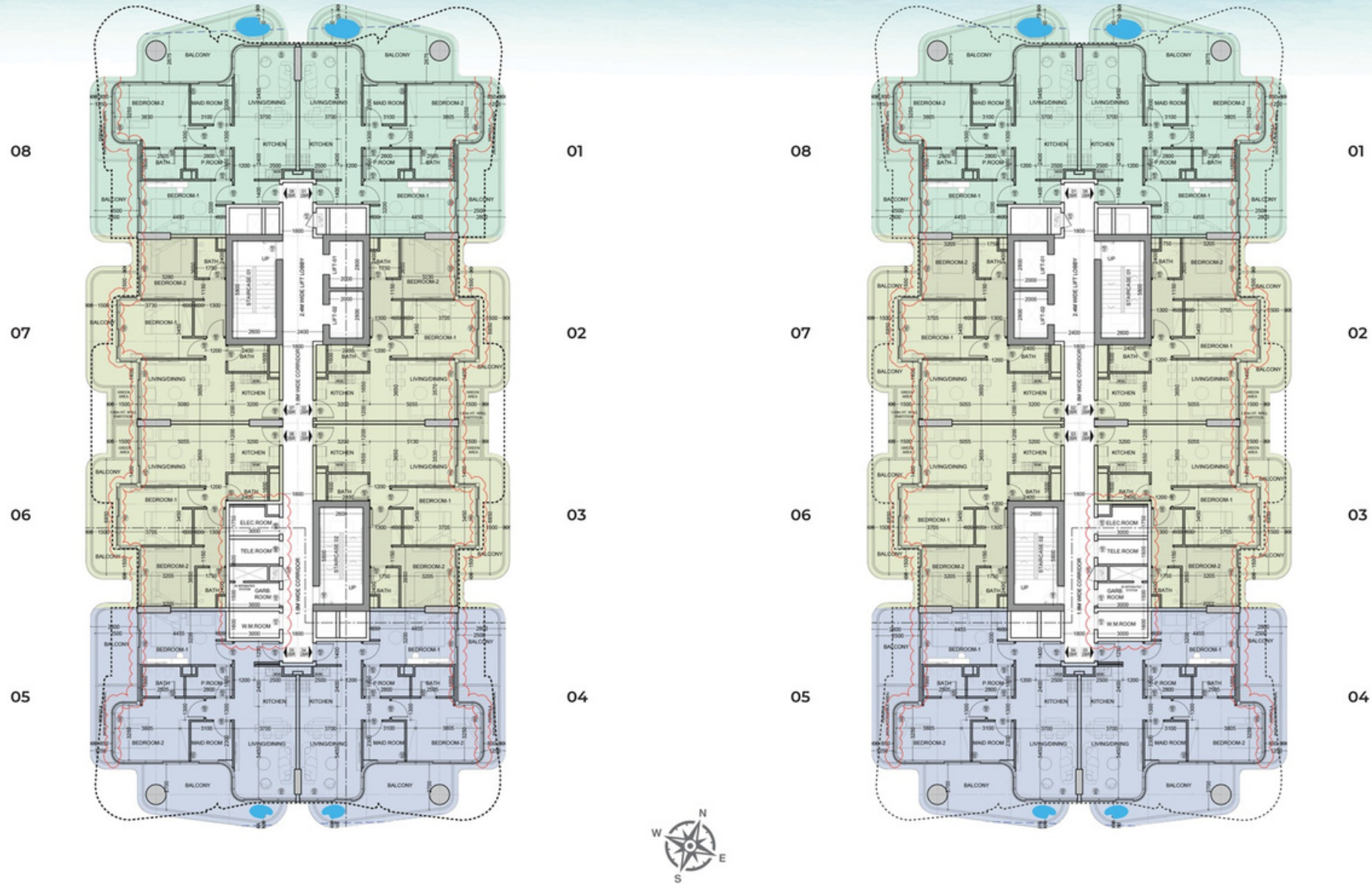
TYPE B : Size: 1364 sq ft | **TYPE D** : Size: 1326 sq ft | **Type E** : Size: 1036 sq ft

2

BEDROOM
FLOOR PLANS







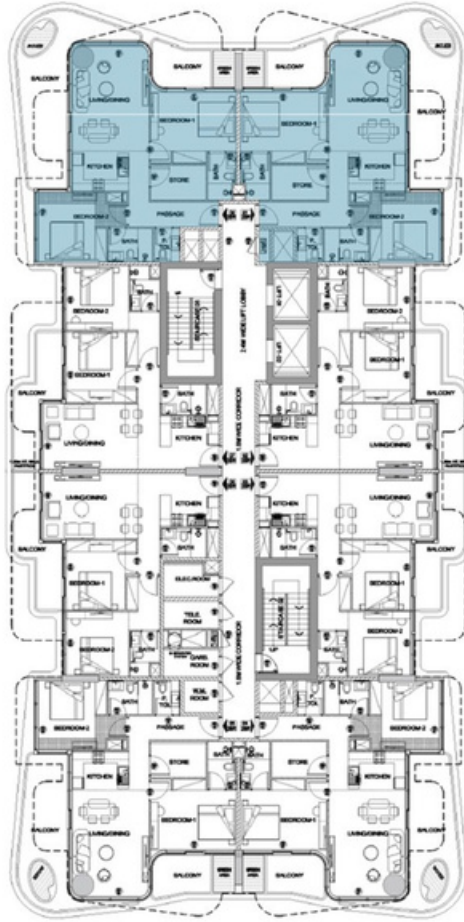
2

BEDROOM UNIT LAYOUTS

SEA VIEW

2BHK TYPE A

FLOOR PLAN



Floor 2nd , 4th , 6th , & 8th

Size : 1483 SQ FT

Living & Dinning | 2 Bedroom

Kitchen | 3 Bathrooms

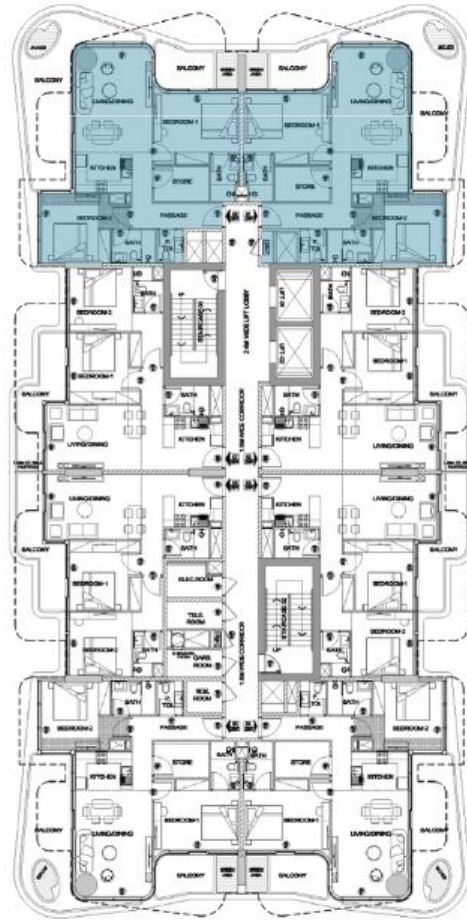
Store rooms



SEA VIEW

2BHK TYPE B

FLOOR PLAN



Floor 1st , 3rd , 5th , 7th & 9th

Size : 1364 SQ FT

Living & Dinning | 2 Bedroom

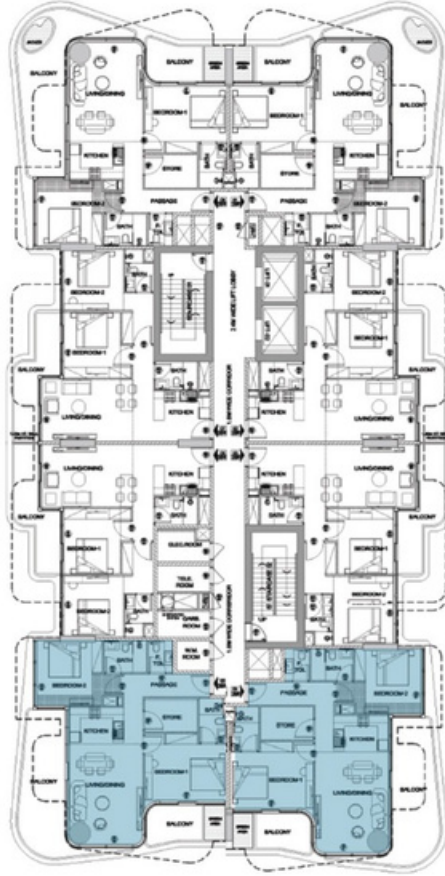
Kitchen | 2 Bathrooms



SEA VIEW

2BHK TYPE C

FLOOR PLAN



Floor 2nd , 4th , 6th , & 8th
Size : 1414 SQ FT

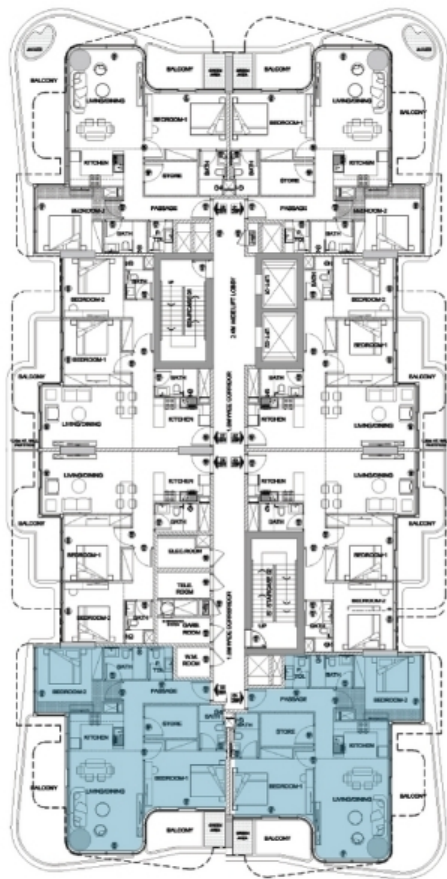
Living & Dinning | 2 Bedroom
Kitchen | 3 Bathrooms
Store rooms



SEA VIEW

2BHK TYPE D

FLOOR PLAN



Floor 1st , 3rd , 5th , 7th & 9th

Size : 1326 SQ FT

Living & Dinning | 2 Bedroom

Kitchen | 2 Bathrooms



SEA VIEW 2BHK TYPE E

FLOOR PLAN



Floor 1st , 3rd , 5th , 7th & 9th
Size : 1036 SQ FT

Living & Dinning | 2 Bedroom
Kitchen | 2 Bathrooms



SEA VIEW 2BHK TYPE F

FLOOR PLAN



Floor 2nd , 4th , 6th , & 8th

Size : 980 SQ FT

2BHK Type 2

Living & Dinning | 2 Bedroom

Kitchen | 2 Bathrooms



3-BEDROOM APARTMENTS

Sizes

1808 to 1902 sqft | 10th to 12th Floor

Open Seaview & Golf Course View

FLOORS: 10th & 12th

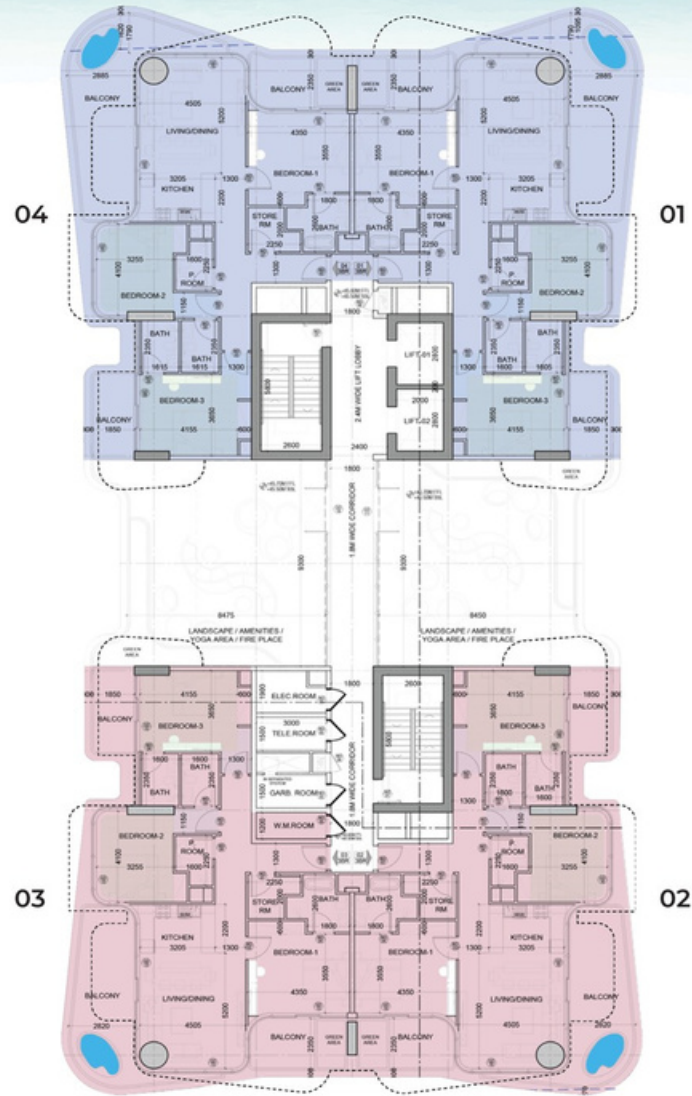
TYPE A & TYPE C - Size: 1832 to 1902 sq ft

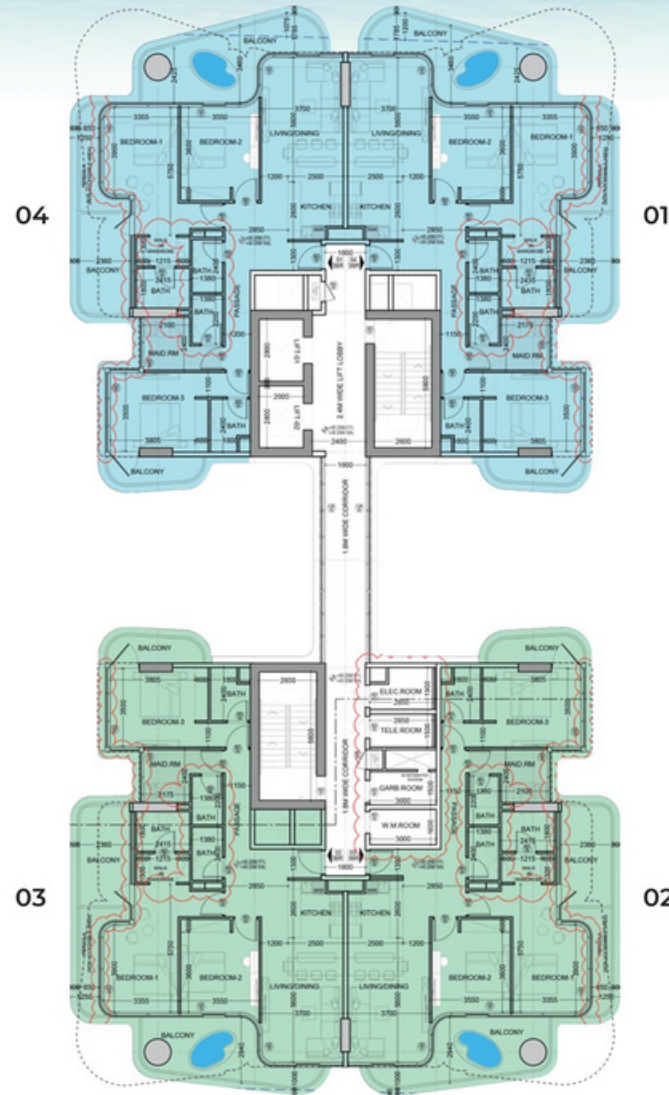
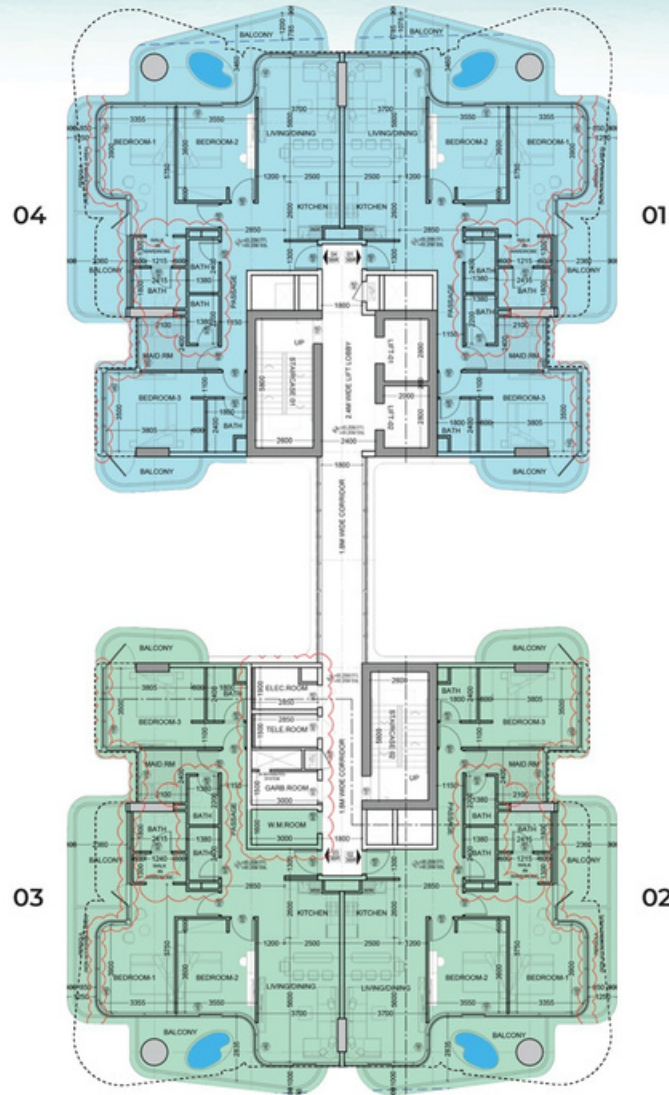
FLOORS: 11th

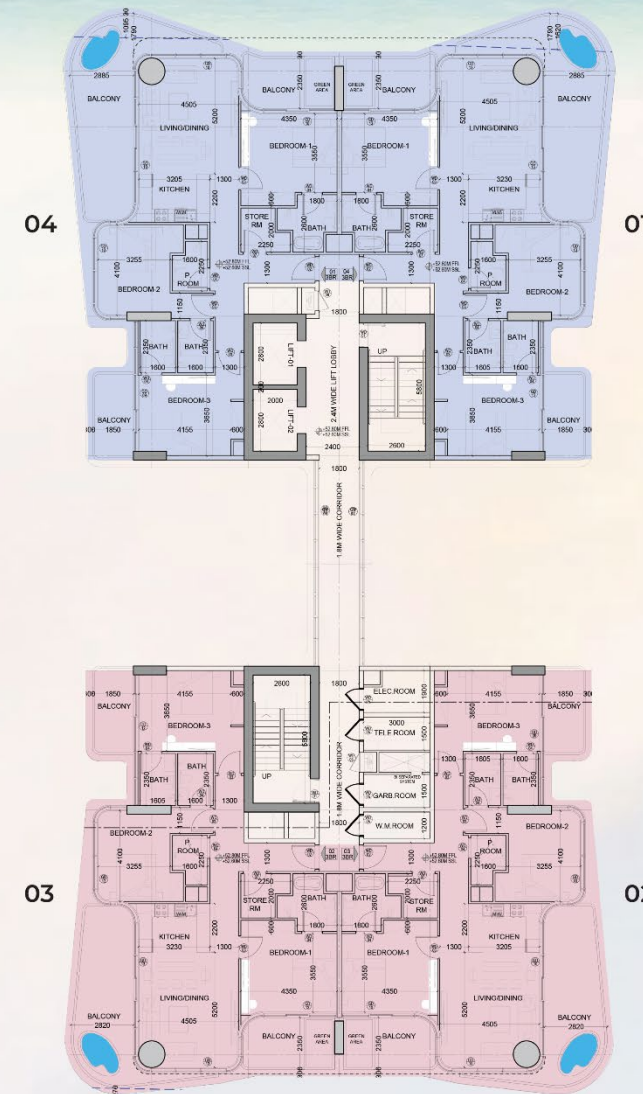
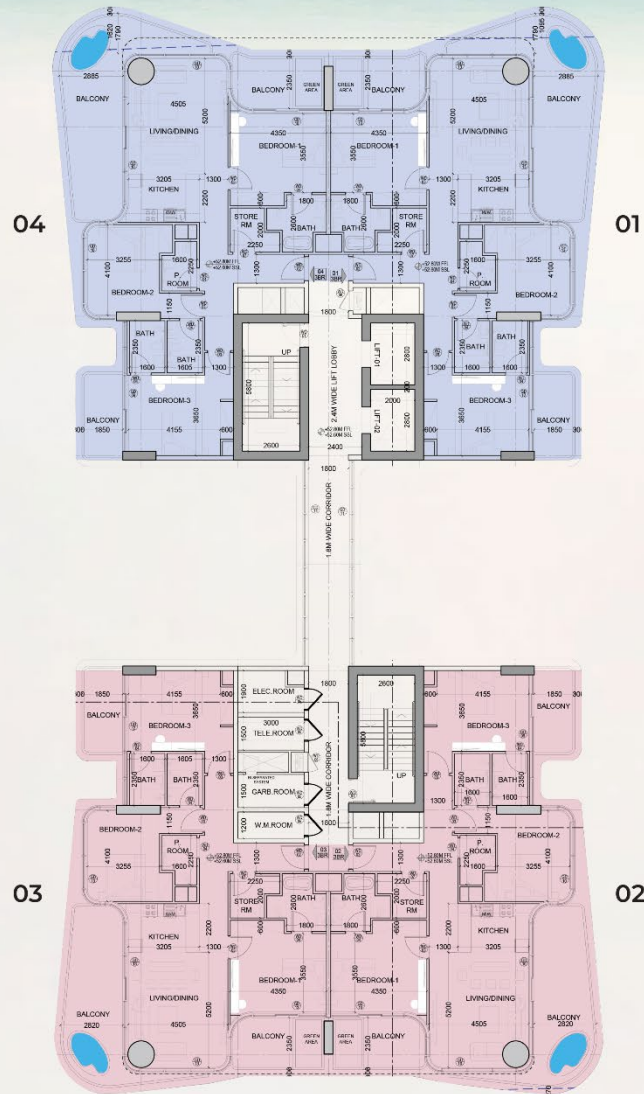
TYPE B & TYPE D - Size: 1808 to 1856 sq ft

3

BEDROOM FLOOR PLANS







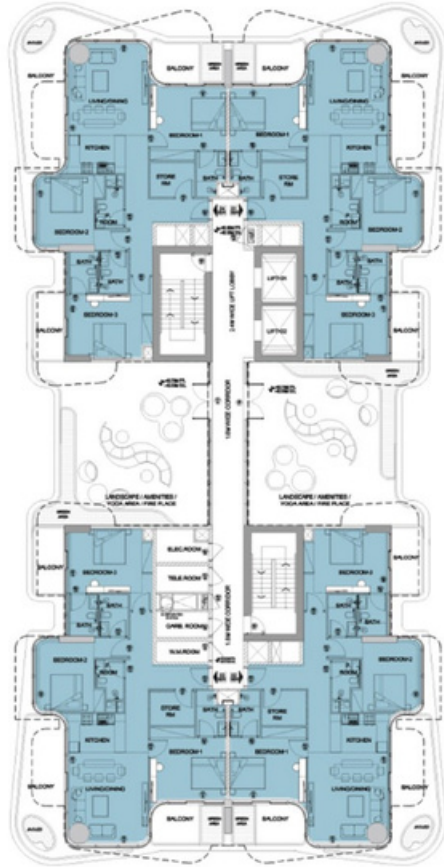
3

BEDROOM UNIT LAYOUTS

SEA VIEW

3BHK TYPE A-C

FLOOR PLAN



Floor 10th , 12th floor

Size : 1832 to 1902 SQ FT

Living & Dinning | 3 Bedroom

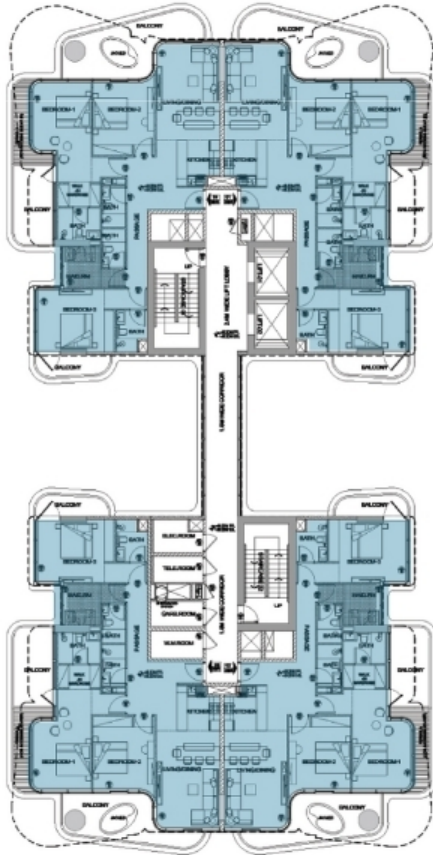
Kitchen | 4 Bathrooms

Store rooms



SEA VIEW 3BHK TYPE B-D

FLOOR PLAN



Floor 11th floor
Size : 1808 to 1856 SQ FT

Living & Dinning | 3 Bedroom
Kitchen | 4 Bathrooms
Maidroom





antoniolupi

BRANDS. FITTINGS & FINISHES

Kitchen appliances from Smeg & Bosch

Furniture inspired by Italian design

Bathroom fittings from Antoniolupi

Apartments designed by a British designer

Chandelier in lobby from Vargov Design

AMENITIES

WORLD OF AMENITIES

53 carefully curated amenities

Podium floor with meticulously designed zones

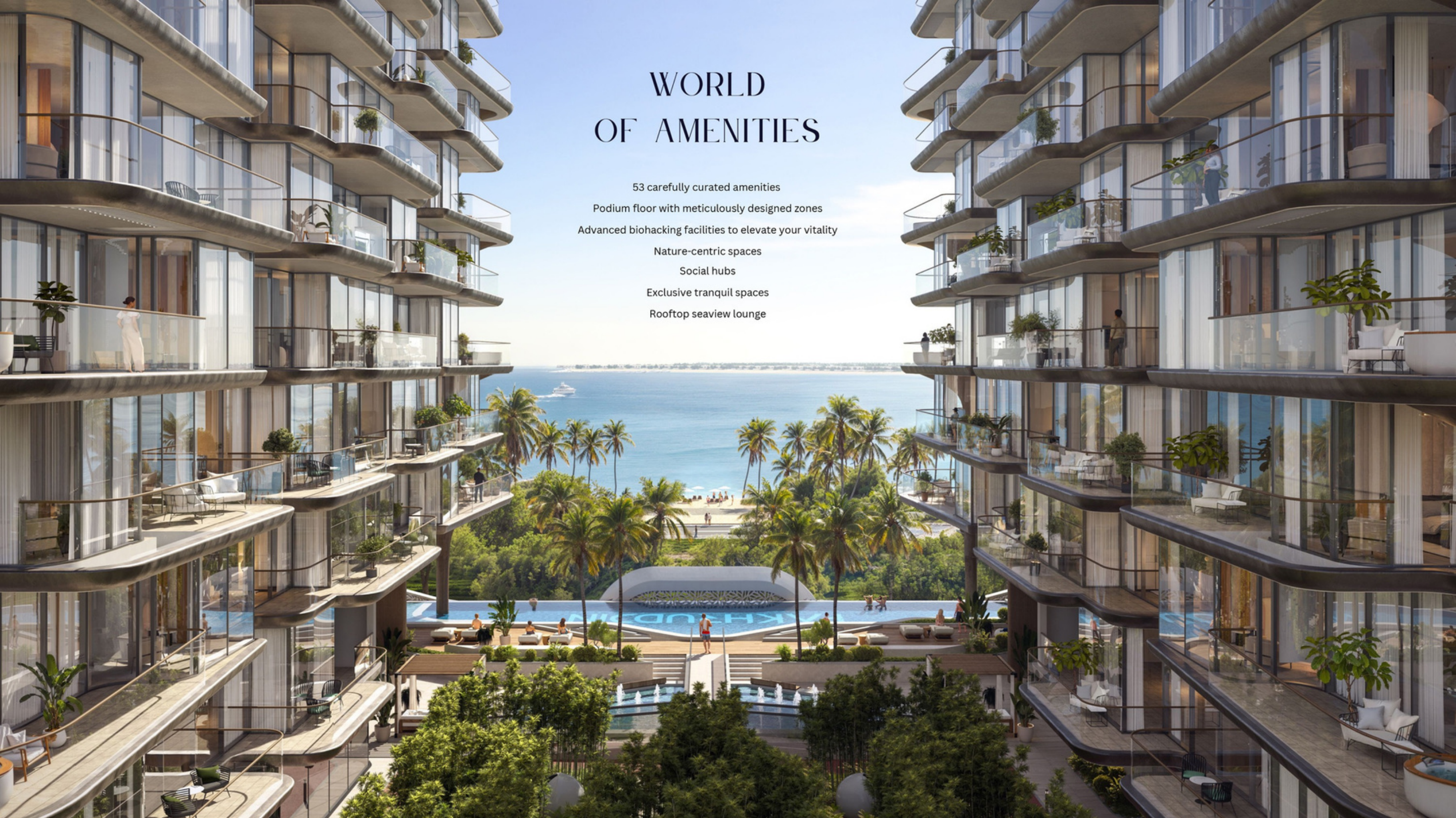
Advanced biohacking facilities to elevate your vitality

Nature-centric spaces

Social hubs

Exclusive tranquil spaces

Rooftop seaview lounge



PODIUM FLOOR





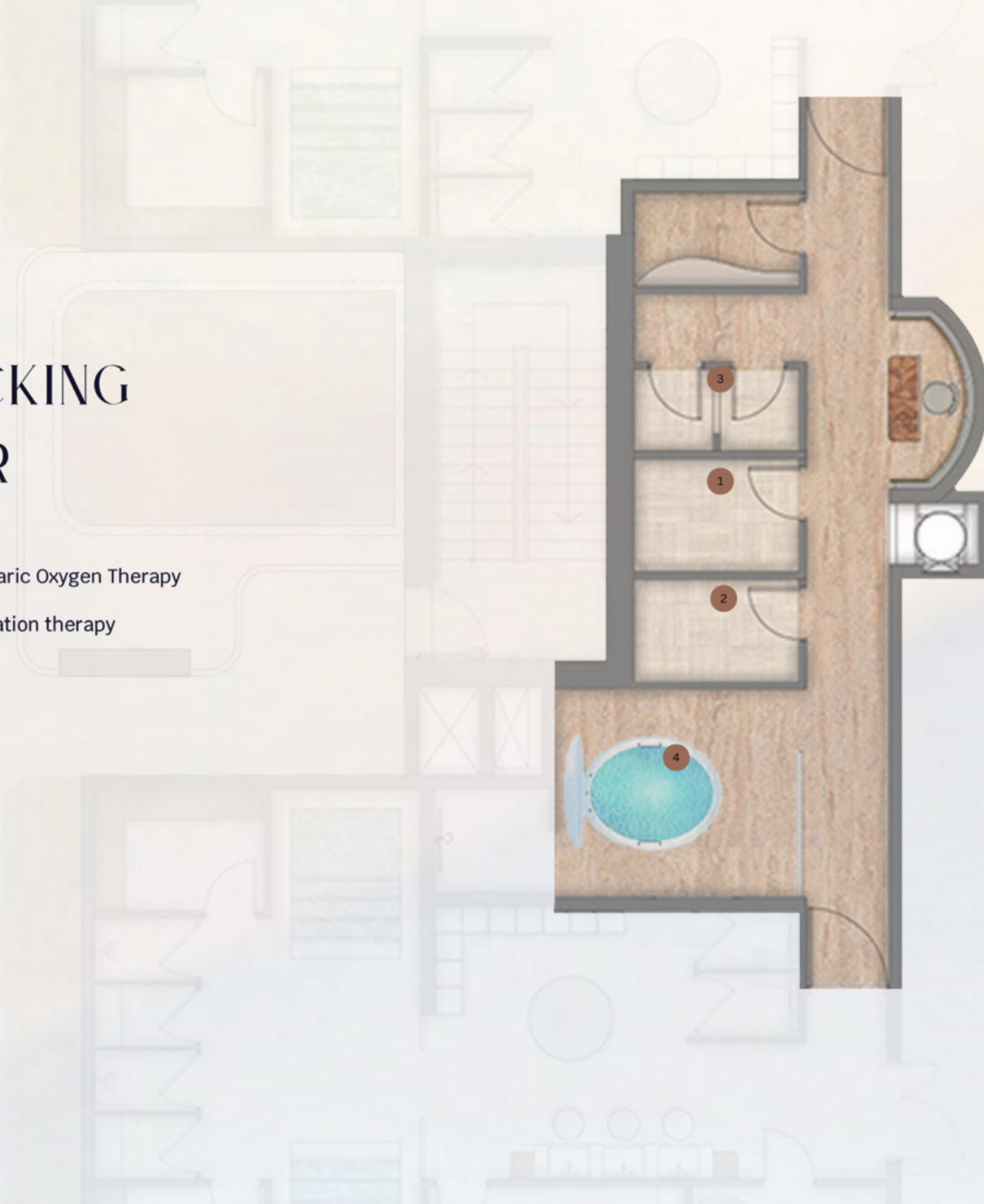
WELLNESS RETREAT

1. Male Spa | 2. Female Spa | 3. Nail Spa | 4. Beauty Salon
5. Massage Bed | 6. Steam Room | 7. Hot Plunge | 8. Cold Plunge
9. Himalayan Salt Brick Sauna | 10. Meditation Zone | 11. The Biohacking Zone



THE BIOHACKING CORNER

- 1. Red Light Therapy
- 2. Hyperbaric Oxygen Therapy
- 3. Cryotherapy
- 4. Floatation therapy



RED LIGHT THERAPY



HYPERBARIC OXYGEN THERAPY

Disclaimer: All information, sizes, floor plans, building views, apartment views, layouts, interiors, visuals and details are for illustrative purposes only and are subject to change without prior notice.

CRYOTHERAPY



Disclaimer: All information, sizes, floor plans, building views, apartment views, layouts, interiors, visuals and details are for illustrative purposes only and are subject to change without prior notice.

FLOATATION THERAPY



Disclaimer: All information, sizes, floor plans, building views, apartment views, layouts, interiors, visuals and details are for illustrative purposes only and are subject to change without prior notice.



NATURE'S EMBRACE

1. Bamboo Oxygen Park | 2. Koi Pond | 3. Green Walkway
4. Jogging Track | 5. Meditation pods





AQUATIC LEISURE

- 1. Infinity Swimming Pool | 2. Pool Loungers | 3. Aqua Gym
- 4. Lounge Chairs | 5. Poolside Deck | 6. Water Fountain
- 7. Sunken Seating | 8. Boardwalk bridge | 9. Cabana seating
- 10. Open Shower

KIDS' ZONE

- 1. Kids' Pool
- 2. Water Slide
- 3. Splash Pool
- 4. Kids' Play Area
- 5. Sand Pit playground
- 6. Skating loop
- 7. Kids' Adventure wall



ACTIVE LIFESTYLE & FITNESS

Indoor Gym | Outdoor Gym | Aqua Gym

Adult Anchor Crag | Jogging Track

Mini Golf Court







SOCIAL SPACES

- 1. Green House Café
- 2. Multi-Purpose Hall
- 3. BBQ pits
- 4. Amphitheater
- 5. Outdoor Cinema
- 6. Outdoor Party Deck



10TH FLOOR



TRANQUIL SANCTUARY

1. Private courtyard | 2. Grill station | 3. Open Kitchen
4. Video Conference Enabled Working Pods | 5. Meeting Pods





Disclaimer: All information, sizes, floor plans, building views, apartment views, layouts, interiors, visuals and details are for illustrative purposes only and are subject to change without prior notice.



ROOFTOP



SEAVIEW LOUNGE

- 1. Seaview Infinity Pool
- 2. Sundeck lounge
- 3. Cabana seating
- 4. Open shower
- 5. Juice bar







GRAND ENTRANCE LOBBY



SÉRÉNIQUE
Residences



2

BEDROOM
APARTMENTS













3

BEDROOM
APARTMENTS













HEALTH CLUB







SPA





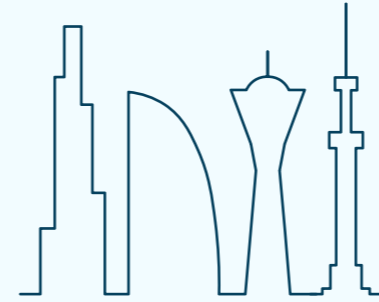
HAIL SALON

THE SANCTUARY





THANK YOU



PREFERENCE
properties

PREFERENCE properties

info@preference.ae

Phone: +971509792375

WhatsApp: +971509792375

<https://preference.ae/>