

An aerial photograph of a river with white water rapids. The water is a deep, dark green color, and the rapids are white and frothy. The background is a dark, textured landscape, possibly a forest or a rocky area. The text "FLOW RESIDENCES" is overlaid in the center of the image.

FLOW  
RESIDENCES

# FLOW

RESIDENCES

*Discover the Hidden Paradise*

Step into a world where luxury meets serenity — Main Realty proudly unveils an exclusive sanctuary on Dubai Islands, where every day unfolds like a private escape aboard a five-star cruise. Infused with the sun-soaked soul of Miami and the iconic brilliance of Dubai, this architectural marvel is a celebration of sophisticated coastal living.

A lifestyle designed to mirror paradise with immersive experiences, refined interiors, and amenities that rival the world's finest resorts.

*This is not just a home. It's a legacy of leisure, prestige, and timeless moments.*

---

WELCOME TO THE FUSION OF MIAMI'S COASTAL  
CHARM AND DUBAI'S ICONIC BRILLIANCE.





AN ARCHITECTURAL MARVEL BLENDING  
*Miami electric energy and Dubai's opulent glamour*



# LIVE BY THE SEA *Dubai Islands*

Dubai Islands is an innovative development shaped by the goals of the Dubai 2040 Urban Master Plan. It aims to build well-connected, eco-conscious communities that support a high quality of life. With a focus on improving accessibility, encouraging tourism, and driving economic progress, the project reflects Dubai's commitment to sustainable urban growth and environmental responsibility.

## KEY AMENITIES

---

**BEACHES & PARKS:** Beachfront access and approx. 2 sq.km of parks and open spaces.

**GOLF COURSES:** Multiple premium golf courses with stunning views of the Arabian Gulf.

**RETAIL & DINING:** Home to Dubai Islands Mall and Souk Al Marfa, a modern indoor Arabian bazaar featuring shops and waterfront restaurants.

**HOSPITALITY:** Luxury hotels and resorts, including the 800-key Hotel.

**ENTERTAINMENT & WELLNESS:** Entertainment hubs, theme parks and more.

**MARINAS & WATER ACTIVITIES:** Marinas for yacht owners and water sports activities.

## FIVE UNIQUELY THEMED ISLANDS

---



### ISLAND A

Mixed-use communities with malls and marinas



### ISLAND B

Resort-style, peaceful neighborhoods



### ISLAND C

Wellness and family retreats



### ISLAND D

Sports and active living



### ISLAND E

Luxury beachfront villas

## ISLAND A

Beach Front, Hotel/Resort Marina, Marina Hotels & Apartments, Mall, Urban Island Residential, Waterfront Residential Beach, Promenade, Community Park, Destination, Art & Cultural District.





FLOW  
RESIDENCES by Mabit

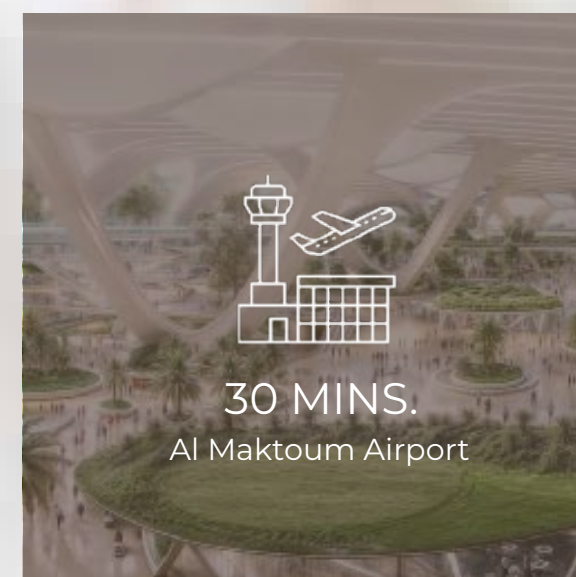
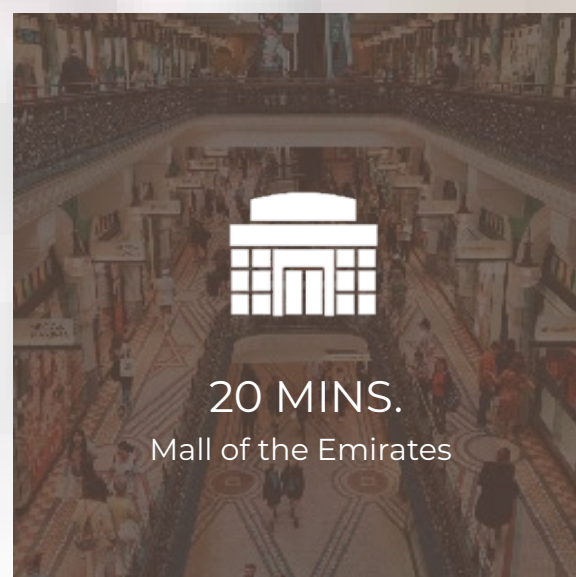
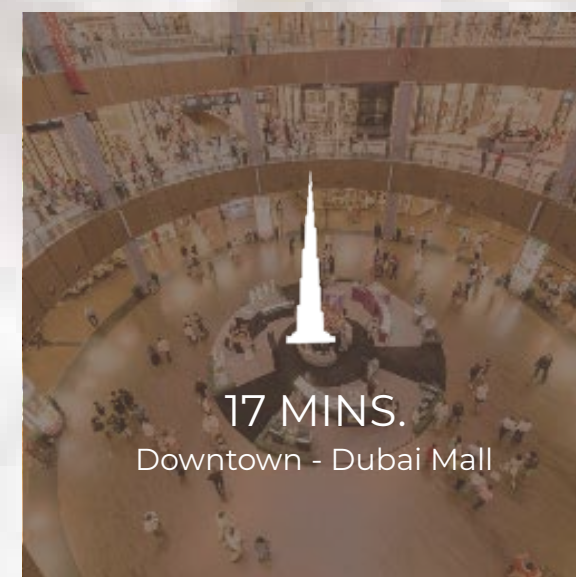
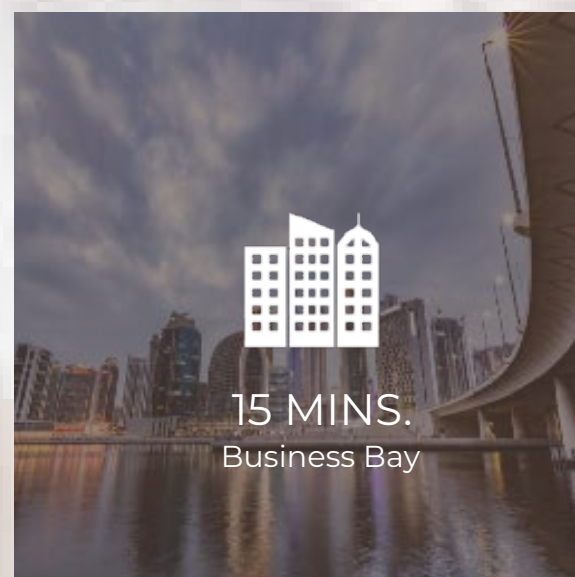


ISLAND A



*Location*  
OVERVIEW

# Driving DISTANCE





## MIAMI VIBES MEETS DUBAI BLING

Main Realty has established itself as a premier real estate developer in Miami, specializing in high-end property development across sought-after locations such as Miramar, Windmill Ranch Road, Weston, Pembroke (Florida), and more. Our expertise in delivering exceptional residential apartments has made us a trusted name in the U.S. real estate market.

Now, Main Realty has expanded to Dubai, bringing its signature craftsmanship, innovation, and superior quality to one of the world's most dynamic real estate markets. Our goal is to compete with top-tier developers while introducing a distinctive blend of American design excellence and Dubai's luxury lifestyle. At Main Realty, we believe that a home is more than just a structure—it is a lifestyle, an experience, and a reflection of individuality. Our projects are meticulously designed with modern elegance, premium finishes, and world-class infrastructure, ensuring that every residence is a true masterpiece.

What sets us apart is our commitment to excellence—from selecting prime locations for both living and investment to crafting spaces that feel like home from the moment you step in. We create not just houses, but exceptional living environments where families can thrive and investors can achieve long-term value.

*Amir Siddiq*  
CEO / FOUNDER



LIVE BY CRUISE SHIP

*Exclusive Collection*



# EMBRACE THE NATURE

## PREMIUM LIFESTYLE

*Inspired by the Sea*

Experience shaped by the serenity of the sea and the elegance of elevated design. Every detail is crafted for those who seek refined living, surrounded by panoramic views, calming breezes, and the timeless rhythm of the ocean.





CRUISE AWAY FROM SOUTH BEACH TO THE  
GOLF COURSE – WELCOME TO FLOW RESIDENCES,  
WHERE MIAMI SOUL MEETS DUBAI SHINE.

*Sail from Sophistication*

Experience a life of effortless elegance and natural rhythm,  
where every moment moves with grace and purpose—just  
like the ocean. Unfold with calm, clarity, and a sense of  
boundless freedom.



# Building CONFIGURATION

## GROUND FLOOR

Lobby, Receiving Area, Elevators, Guard Room, Telephone Room, Mep, CCTV Room and Garbage Room

## 1ST FLOOR AMENITIES

BBQ Area, Kid's Playground, Splash Pool, Kid's Pool, Outdoor Gym, Outdoor Meeting and Private Garden

## APARTMENTS

G - Podium | 3 Bedroom Townhouses  
1F | 1, 2, 3 Bedrooms Apartment  
1F - 6F | 1 to 2 Bedrooms Apartment

## ROOFTOP AMENITIES

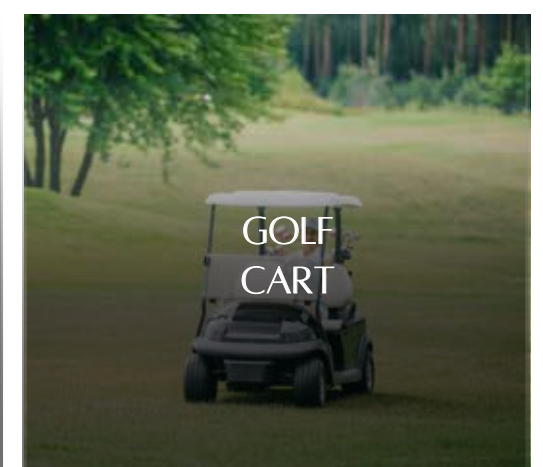
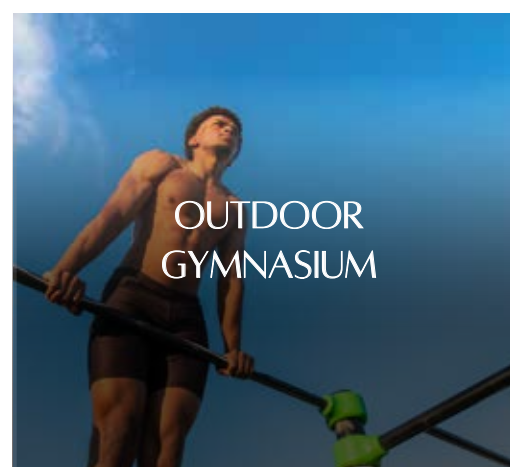
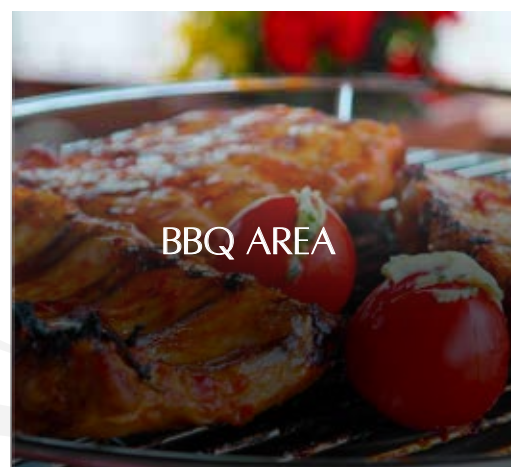
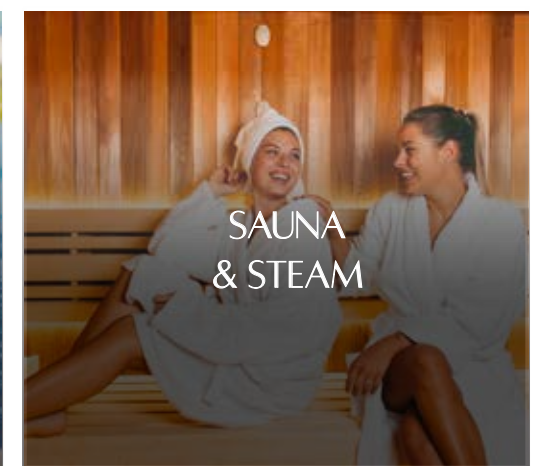
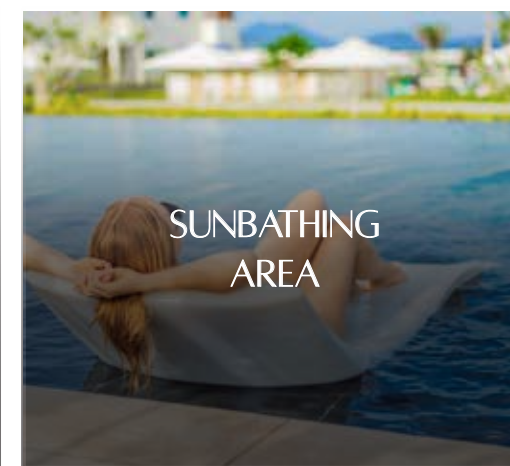
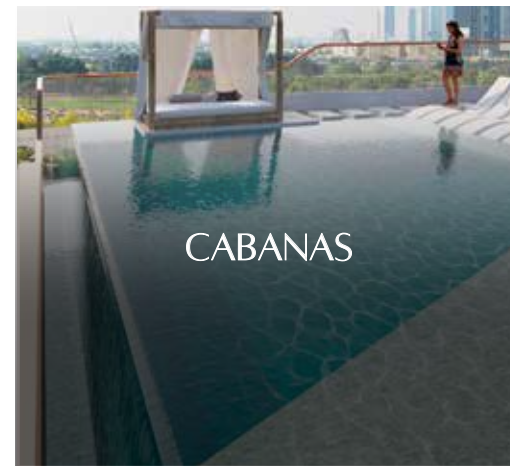
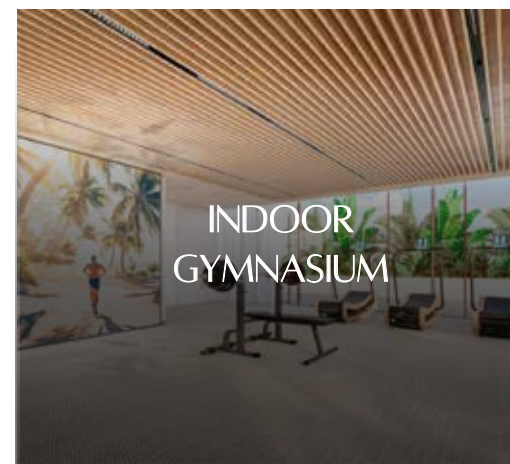
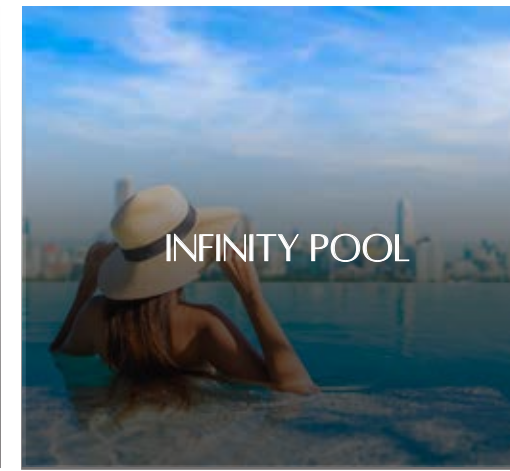
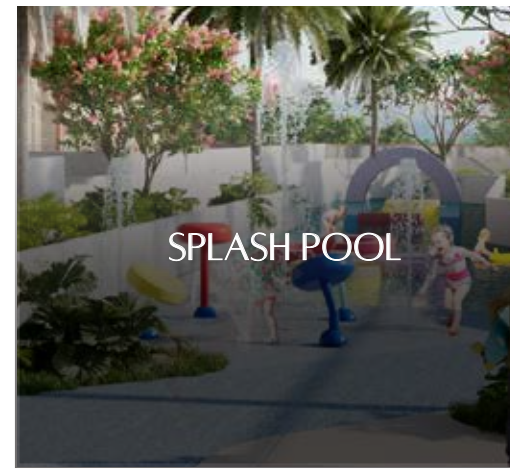
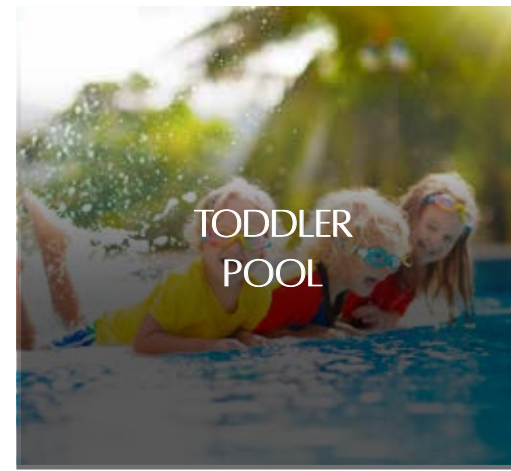
Sunbathing Area, Water Lounges, Cabana, Infinity Pool, Pool Bar, Dj Booth, Bar's/ Seating Zone, Shift for Pod, Outdoor Meeting Yoga Area, Garden and Sandy Outdoor Seating



YOUR SLICE OF PARADISE  
JUST A *Step* AWAY.

# 16 WORLD-CLASS Amenities

Experience a lifestyle defined by excellence where world-class amenities surround you with comfort, convenience, and luxury at every turn. From serene leisure spaces to state-of-the-art facilities, every detail is designed to elevate your everyday.







YOUR *Peaceful* ESCAPE  
BEGINS AT THE EDGE  
OF *Infinity*.

# FEEL THE HEAT OF MIAMI, RIGHT HERE IN DUBAI.

We bring the heat, rhythm, and soul of Miami to the heart of Dubai—where every corner pulses with vibrant energy, coastal luxury, and a lifestyle that never sleeps. Get ready to live bold, live bright, and feel the Miami vibe in every moment.





DAY CLUB



NIGHT CLUB



SAND DECK





FITNESS THAT MATCHES  
YOUR *Lifestyle.*



A JOYFUL *Space* FOR  
LITTLE LEARNERS AND  
BIG *Dreams.*





## *Reception & Lobby*

A stylish Reception & Lobby that blends coastal cool with glamorous elegance, offering a bold first impression of luxury and lifestyle.





# INTERIOR *Design*

A seamless fusion of Miami's relaxed, modern elegance with Dubai's bold, luxurious flair. Every detail is curated to reflect a lifestyle of effortless sophistication and standout style.



# Living Room

Meticulously crafted finishes create a serene atmosphere that mirrors the comfort and luxury of a 5-star cruise retreat.



# Island Kitchen

A culinary space that inspires—thoughtfully designed with elegant surfaces, premium appliances, and timeless style.



WAKE UP WITH THE *rhythm* OF THE sea  
WHERE EVERY MORNING MOVES WITH THE OCEAN



# *Bedroom*

Wake up in luxury every day—this bedroom, with its soft textures and refined details, is your private escape to serenity.



## *Bathroom*

Nature-inspired design meets modern elegance in this bathroom, where earthy tones and luxurious finishes create a soothing, spa-like atmosphere.



*Acretic*  
PLUNGE POOL

*Study*  
ROOM



3 BEDROOM

*townhouses*











# *Flow* PLANS

Flow Residences showcases an elegant array of carefully designed floor plans, including one-, two-, and three-bedroom apartments alongside stylish townhouses—each thoughtfully tailored to accommodate diverse lifestyle needs. For those desiring a heightened living experience, the premium three-bedroom deluxe offers generous space, refined comfort, and a touch of understated luxury. Every residence is designed to welcome natural light, promote seamless functionality, and reflect the calming spirit of coastal living.

# FLOW

RESIDENCES

## 1 BEDROOM

## TYPE 1

	sq.m.	sq.ft.
Apartment Size:	65-70	696- 755
Balcony Size:	14-27	148-287
Total Size:	78-97	844-1042

### TYPICAL FLOOR PLAN



Apartment No.  
209, 309, 409, 509 & 605



Apartment No.  
208, 308, 408, 508 & 604



Apartment No.  
106



# FLOW

RESIDENCES

## 1 BEDROOM

## TYPE 2

	sq.m.	sq.ft.
Apartment Size:	71	760
Balcony Size:	13-14	136-153
Total Size:	83-85	896-913

### TYPICAL FLOOR PLAN



Apartment No.  
207 & 407



Apartment No.  
307 & 507



# FLOW

RESIDENCES

## 1 BEDROOM

## TYPE 3

	sq.m.	sq.ft.
Apartment Size:	74	800
Balcony Size:	26-30	281-318
Total Size:	100-104	1081-1117

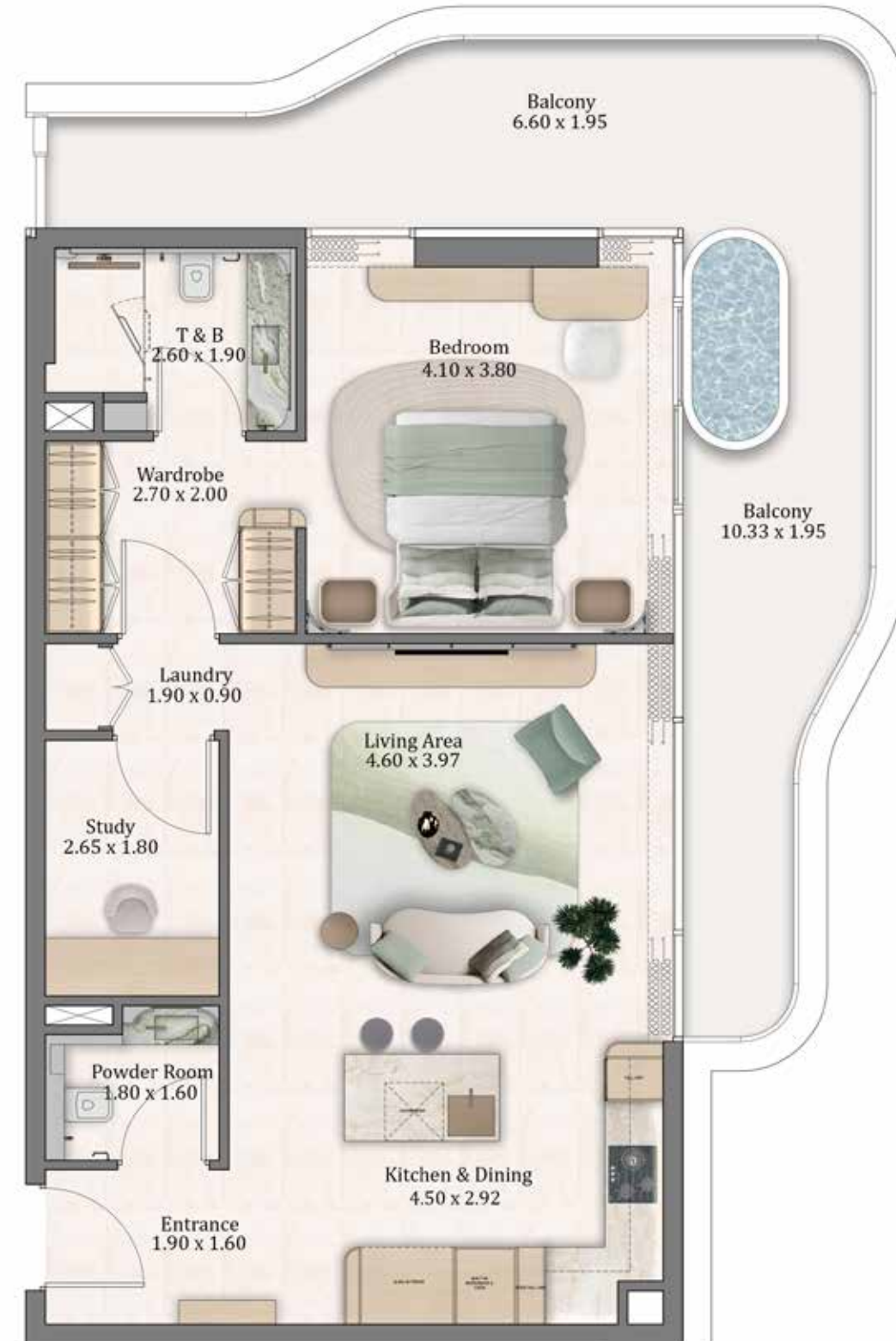
### TYPICAL FLOOR PLAN



Apartment No.  
206 & 406



Apartment No.  
306 & 506



# FLOW

RESIDENCES

## 1 BEDROOM

## TYPE 4

	sq.m.	sq.ft.
Apartment Size:	76	821
Balcony Size:	14-34	146-363
Total Size:	90-110	967-1184

### TYPICAL FLOOR PLAN



Apartment No.  
204 & 404



Apartment No.  
104, 304 & 504



# FLOW

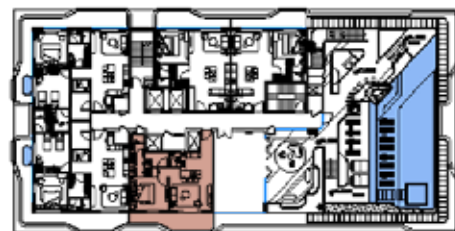
RESIDENCES

## 1 BEDROOM

## TYPE 5

	sq.m.	sq.ft.
Apartment Size:	72	774
Balcony Size:	16	176
Total Size:	88	950

### TYPICAL FLOOR PLAN



Apartment No.  
603



# FLOW

RESIDENCES

## 2 BEDROOM

## TYPE 1

	sq.m.	sq.ft.
Apartment Size:	104	1114-1120
Balcony Size:	33-108	354-1159
Total Size:	136-211	1469-2273

### TYPICAL FLOOR PLAN



Apartment No.  
201, 202, 401, 402, 601 & 602



Apartment No.  
301, 302, 501 & 502



Apartment No.  
101



Apartment No.  
102



# FLOW

RESIDENCES

## 2 BEDROOM

## TYPE 2

	sq.m.	sq.ft.
Apartment Size:	110	1184
Balcony Size:	15-57	158-610
Total Size:	125-167	1343-1795

### TYPICAL FLOOR PLAN



Apartment No.  
203 & 403



Apartment No.  
303 & 503



Apartment No.  
103



# FLOW

RESIDENCES

## 2 BEDROOM

## TYPE 3

	sq.m.	sq.ft.
Apartment Size:	120	1288
Balcony Size:	33-38	358-415
Total Size:	153-158	1646-1703

### TYPICAL FLOOR PLAN



Apartment No.  
205 & 405



Apartment No.  
305 & 505



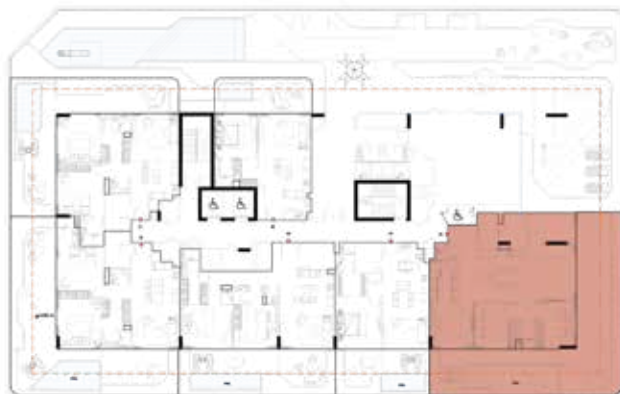
# FLOW

RESIDENCES

## 3 BEDROOM

	sq.m.	sq.ft.
Apartment Size:	146	1573
Balcony Size:	118	1274
Total Size:	264	2847

## TYPICAL FLOOR PLAN



Apartment  
105



# FLOW

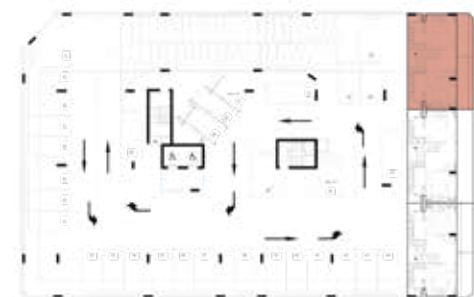
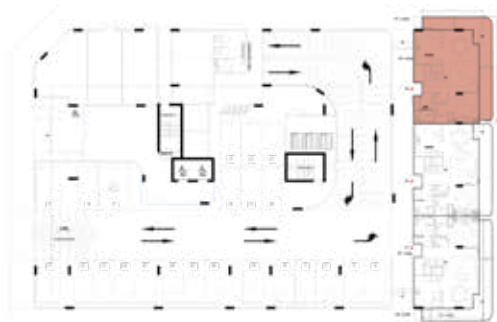
RESIDENCES

## 3 BEDROOM

## TOWNHOUSE

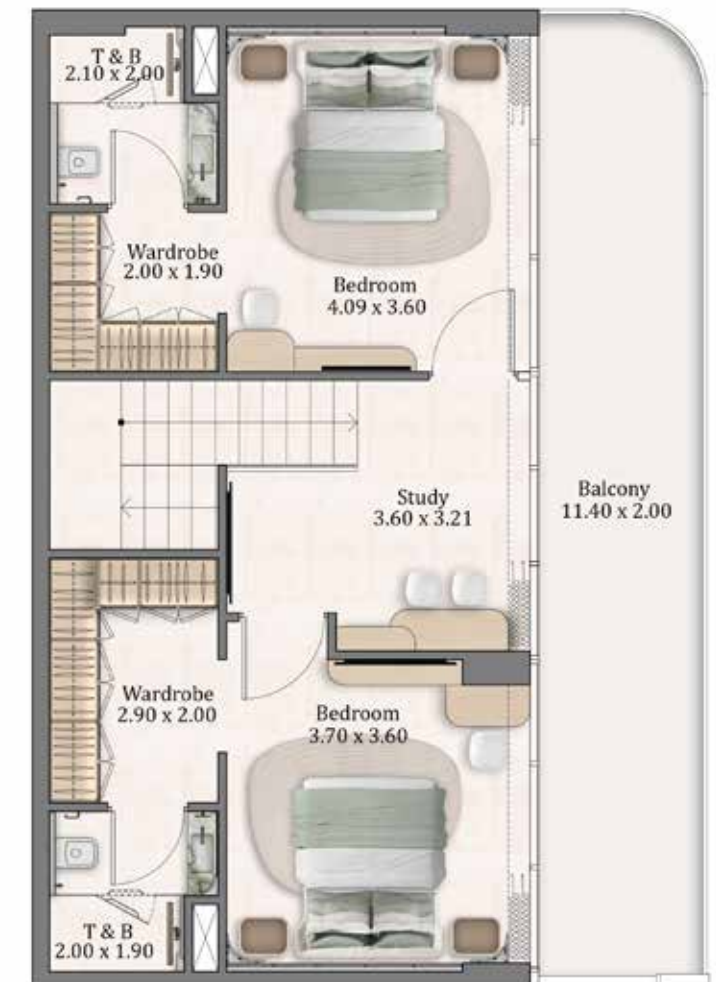
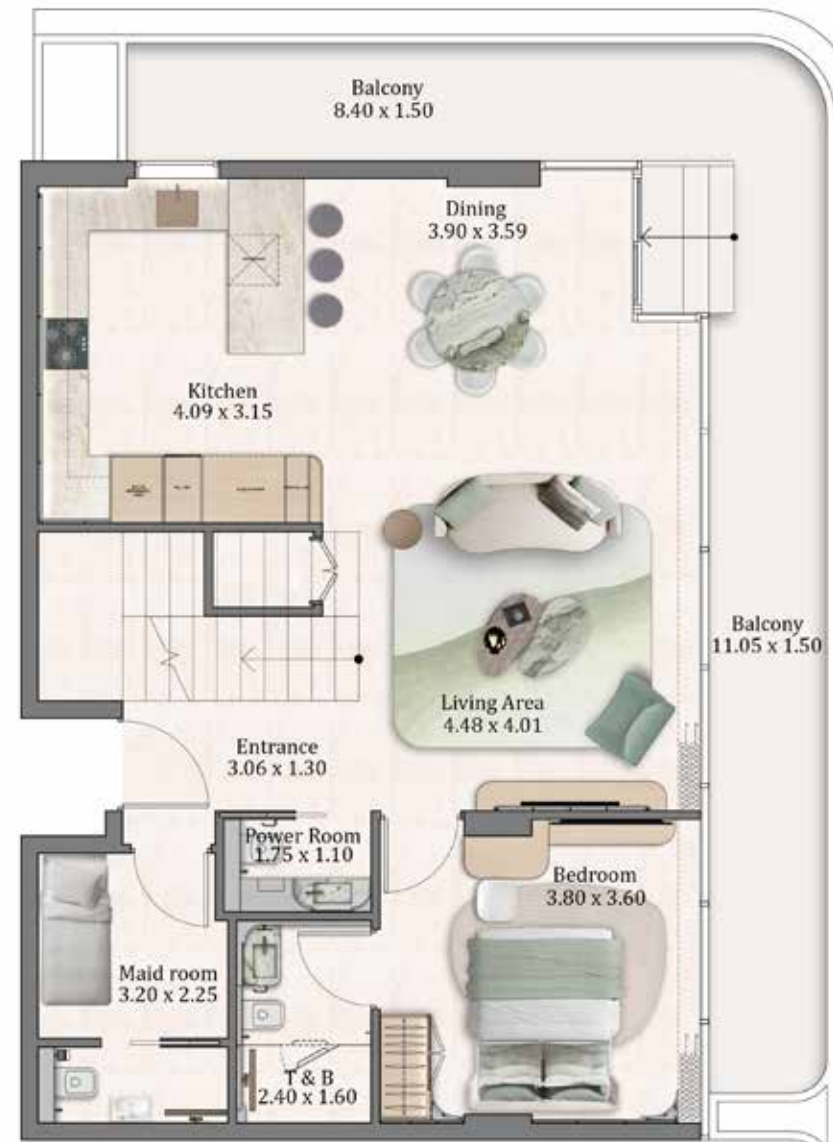
	sq.m.	sq.ft.
Apartment Size:	151	1629
Balcony Size:	53	568
Total Size:	204	2198

### TYPICAL FLOOR PLAN



Townhouse

TH01



# FLOW

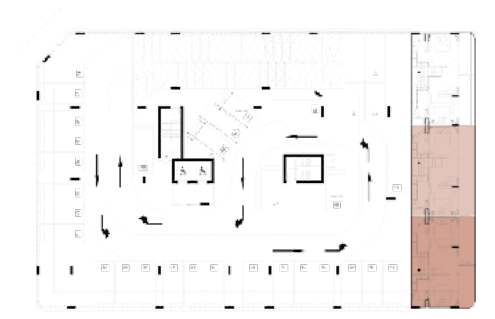
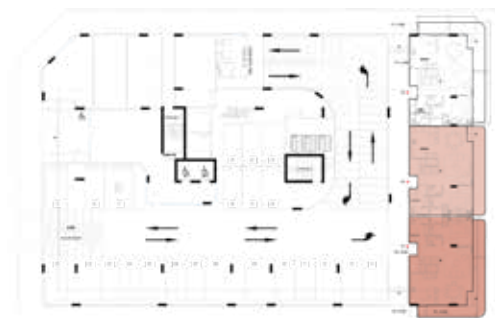
RESIDENCES

## 3 BEDROOM

## TOWNHOUSE

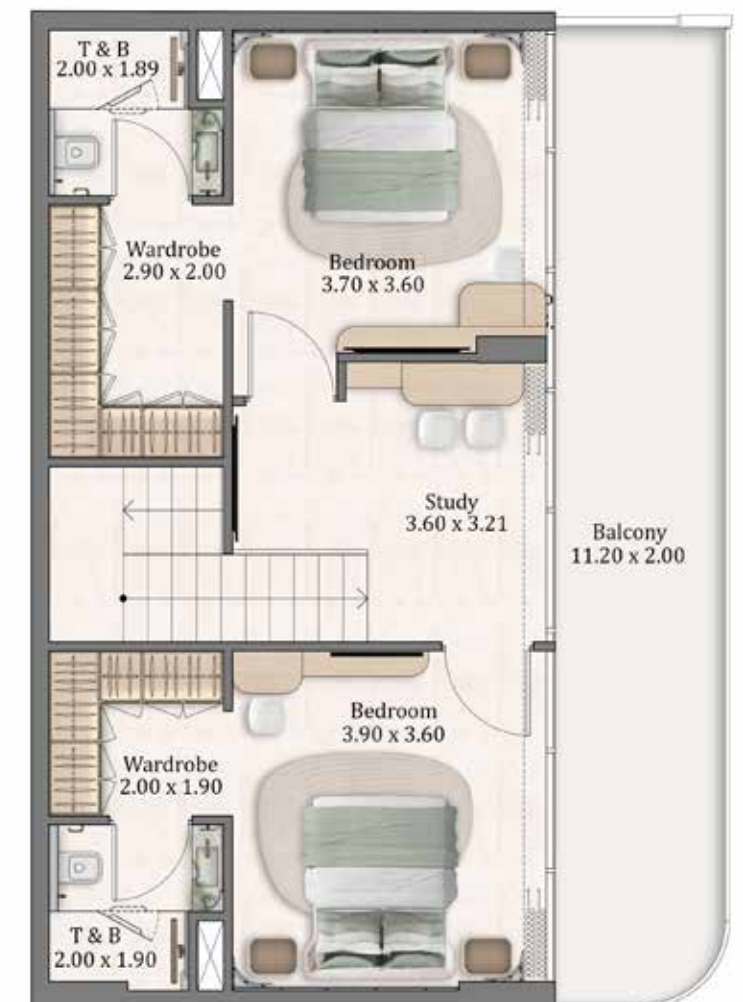
	sq.m.	sq.ft.
Apartment Size:	151-154	1630-1658
Balcony Size:	41-54	508-742
Total Size:	192-208	2068-2235

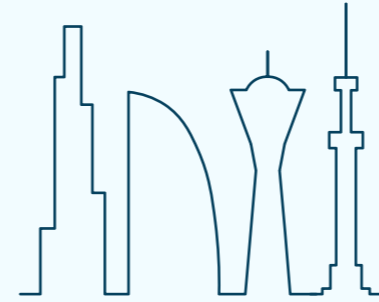
### TYPICAL FLOOR PLAN



Townhouse

TH02 & TH03





**PREFERENCE**  
properties

**PREFERENCE properties**

[info@preference.ae](mailto:info@preference.ae)

Phone: +971509792375

WhatsApp: +971509792375

<https://preference.ae/>