

ELLINGTON
COVE

LIVE BY



DESIGN

THE VISION

Along the tranquil outer reaches of Dubai Islands, Ellington Cove awaits an exquisite retreat where life flows effortlessly with the rhythm of the sea. This exclusive development offers a harmonious blend of coastal elegance and contemporary design, reimagining beachfront living with unparalleled sophistication.

Ellington Cove promises more than just private beach access—it offers an immersive resort-inspired lifestyle designed for those who seek serenity without compromise. Here, you'll find everything you need for a life of leisure, relaxation, and connection—all within an exclusive development.

No need to plan escapes to holiday destinations; at Ellington Cove, the holiday comes to you.

DEVELOPMENT

A retreat
A destination
A masterpiece



An architecture in motion

THE CONCEPT

Following Ellington's signature design philosophy, the project harmoniously blends modern elegance with exceptional functionality, setting a new standard for residential excellence. With its thoughtfully curated spaces and boutique-inspired amenities, Ellington Cove offers a lifestyle that rivals the world's finest premium hotels.

Designed to be more than just a residence, it creates a unique holiday destination within your home, where everyday living feels like an escape to paradise.



SERENITY



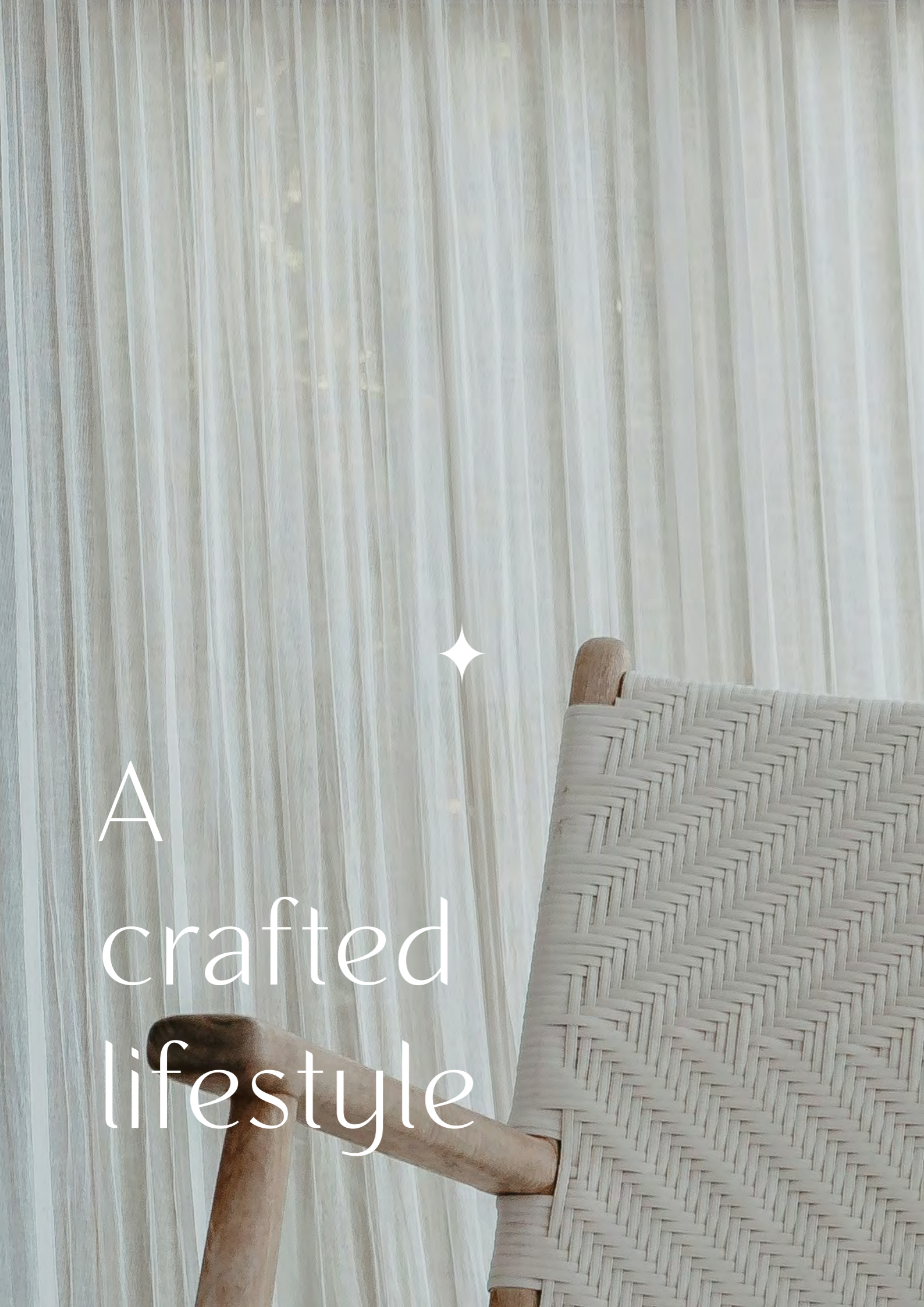
SANCTUARY

THE LOCATION

Nestled along the outer reaches of Dubai Islands, Ellington Cove offers a blissful blend of city-living and natural beauty.

A sanctuary amongst the sand, with a focus on wellness and a profound connection with nature. Dubai Islands also offers a connection to the vibrant culture and entertainment of the city. In close proximity to stunning beaches, retail outlets, entertainment venues and culinary delights.





A crafted lifestyle

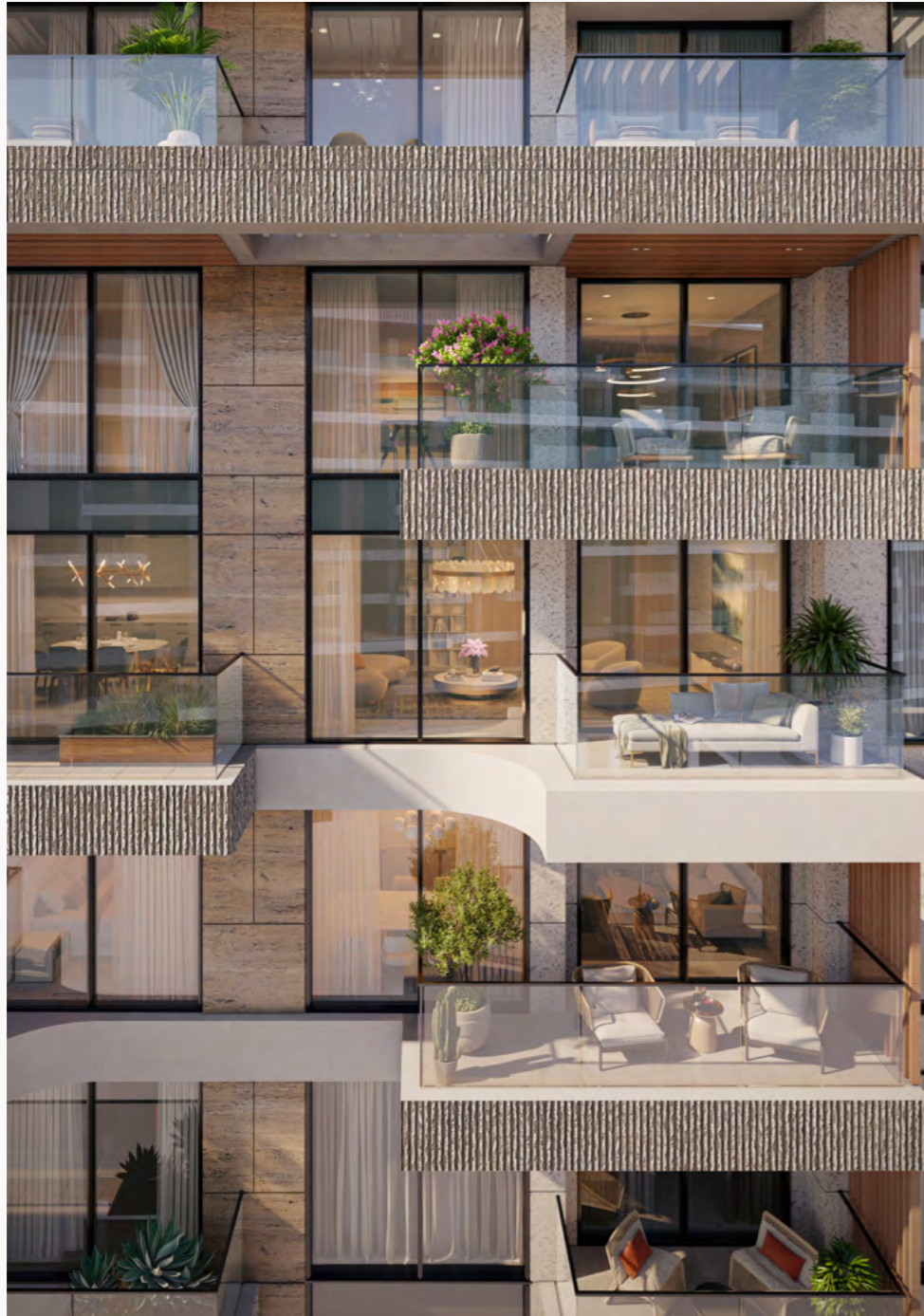
THE LIFESTYLE

Ellington Cove offers unparalleled access to leisure, entertainment, and holiday experiences. With its own private beach and close proximity to the island's golf courses, sports country club, and premier entertainment venues, it is the perfect destination for a vibrant and Unparalleled lifestyle.

Experience the epitome of coastal living in an oasis of elegance and tranquility.



ARTFULLY

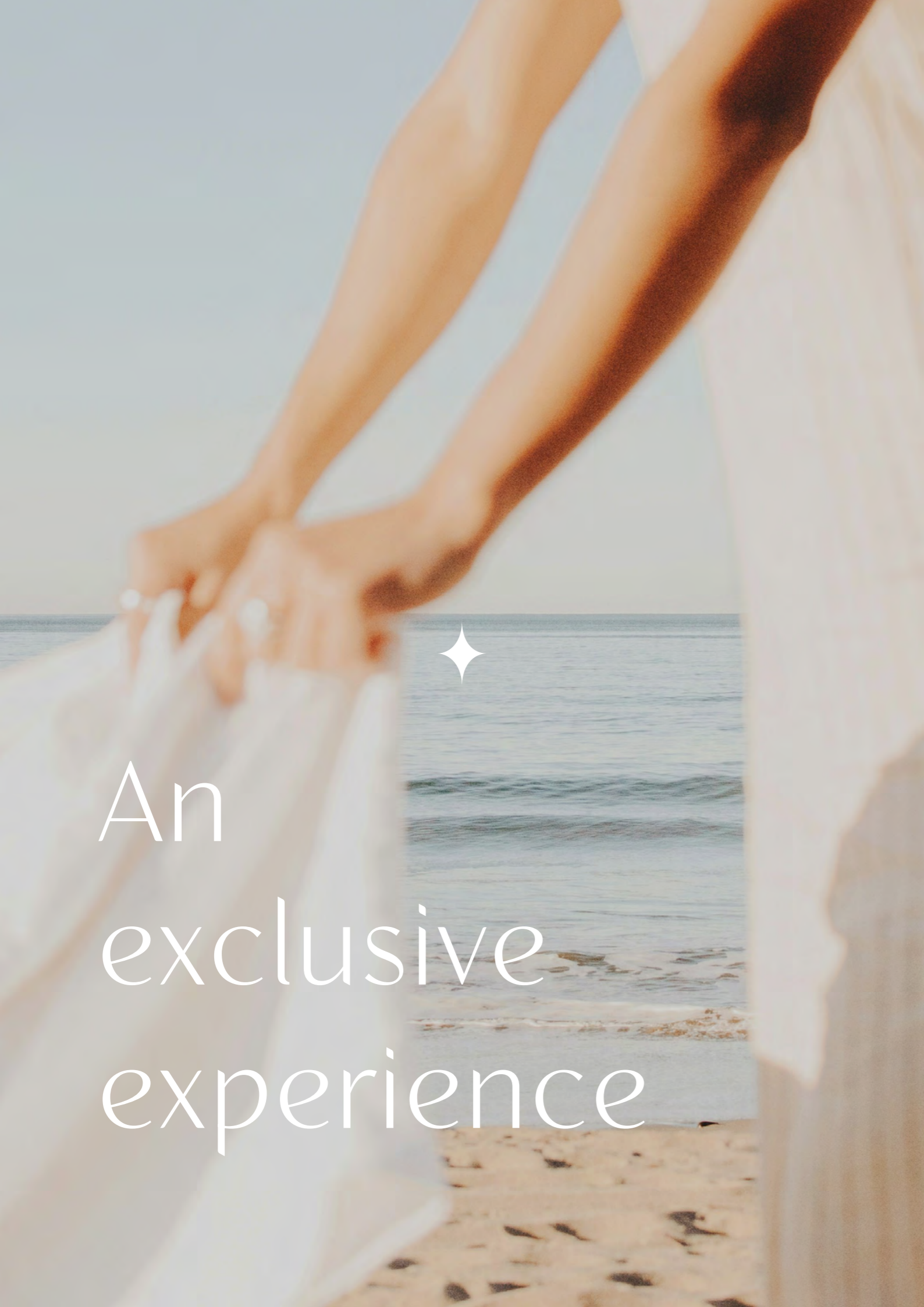


FRAMED

THE FACADE

The façade of Ellington Cove is a testament to minimalist elegance and contemporary design. With a striking exterior, the development features four distinct buildings that harmonize beautifully with their surroundings. Adorned in warm terracotta tones, the architecture evokes a natural and tropical aesthetic, seamlessly blending modern sophistication with organic textures. The clean lines and thoughtful detailing create a bold yet understated presence, offering a timeless appeal that resonates with its beachfront setting.





An
exclusive
experience



THE ENTRANCE

A seamless blend of elegance and functionality, the journey begins with a spacious, thoughtfully planned drop-off zone, ensuring effortless arrivals and departures. The main entrance exudes an air of exclusivity, with grand architectural elements and unique detailing that set the tone for the exceptional lifestyle within.

From the moment you arrive, every detail is crafted to provide a convenient, welcoming, and elevated experience, reflecting the sophistication and prestige of Ellington Cove.



THE RESIDENCES

ELLINGTON
COVE

PERFECT



RHYTHM

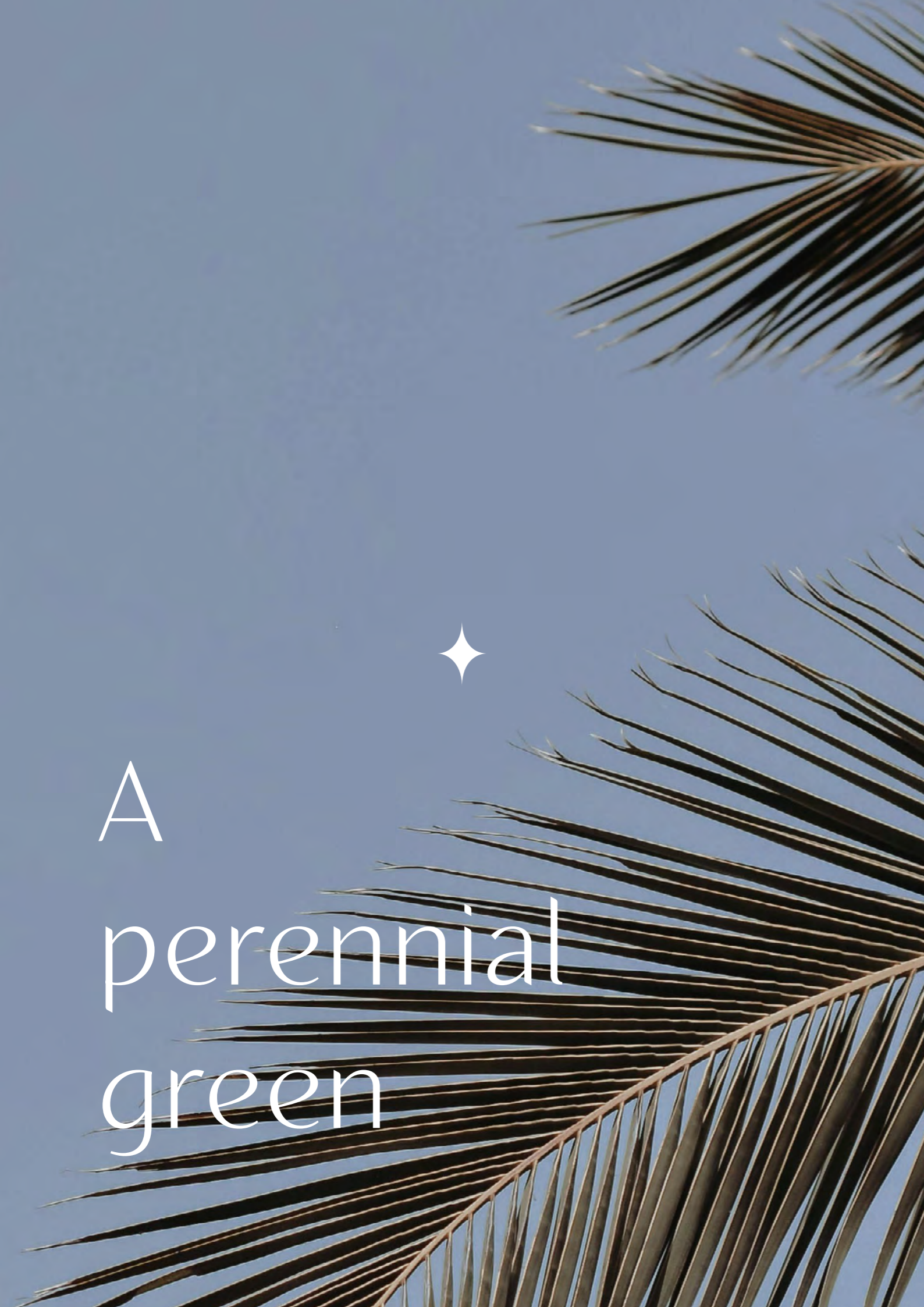
THE RETAIL

Experience the perfect blend of convenience and style with Ellington Cove's retail spaces. Featuring boutique shops, trendy cafes, fine dining, and essential services, these vibrant outlets cater to both residents and the community, creating a dynamic hub for modern living.

Thoughtfully designed to elevate convenience and bring a vibrant, community-focused lifestyle to your doorstep.



BROWS & ARROWS



A
perennial
green

THE GARDENS

A sanctuary of verdant beauty, the garden unfolds as a living canvas, where nature's artistry flourishes in every bloom and leaf. Whispering breezes dance through sculpted pathways, while sun-dappled nooks invite quiet reflection. A haven of serenity, the garden harmonizes the rhythm of the earth with the spirit of tranquility, offering a timeless retreat to nourish the soul and inspire the senses.



ELLINGTON

A TIMELESS



APPROACH

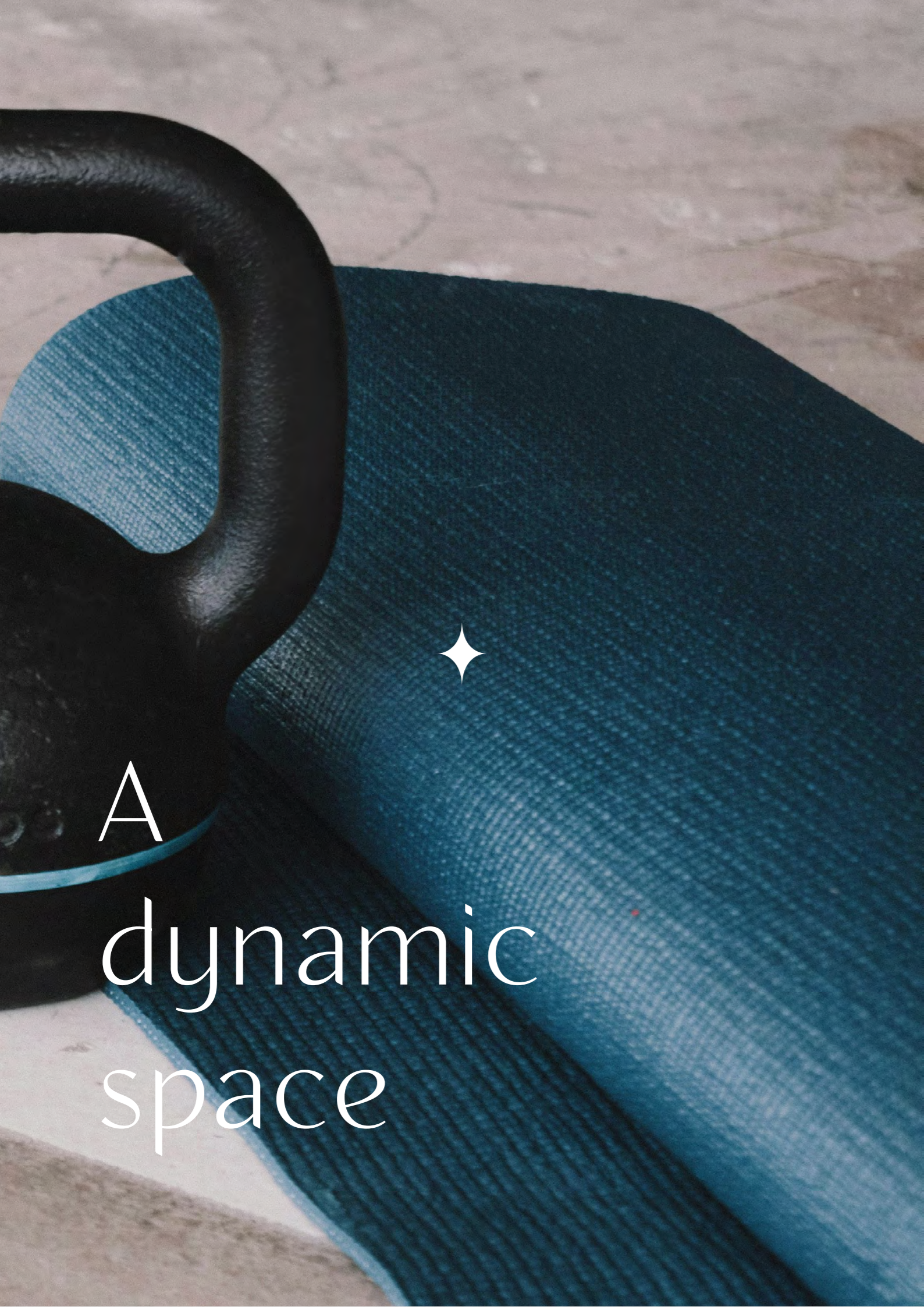
THE LOBBY

Step from the natural world outside into a refined sanctuary within. Designed generously, the spacious lobby features contemporary furnishings, intricate detailing, and an overall feeling of openness and warmth.

The overall space offers places to relax, gather, and work, and, naturally lit thanks to floor-to-ceiling windows, the space truly feels like home, offering a blissful and inviting retreat for all who enter.

The lobby offers the perfect blend of elegance and functionality, featuring a warm welcoming reception area, concierge, and security services, seamlessly setting the tone for the elevated lifestyle that awaits beyond.





A
dynamic
space

FITNESS STUDIO

Residents can enjoy access to a fully equipped fitness studio featuring high-quality, eco-friendly equipment designed for a range of workout needs. The space includes dedicated areas for diverse fitness routines and is thoughtfully planned to provide a serene and motivating environment.

With an emphasis on versatility, the yoga studio is outfitted with essential accessories and offers features like an integrated sound system and adjustable lighting to suit any practice. Soundproofing ensures a distraction-free atmosphere, allowing residents to focus fully on their wellness journey.



PAUSE



& CONNECT

WELLNESS SPA

The spa at Ellington Cove is a sanctuary designed for rest and renewal. At its center, a tranquil hydrotherapy pool offers a serene escape, surrounded by calming interiors inspired by coastal beauty.

Adjacent to the pool, state-of-the-art massage chairs provide a soothing experience, helping to relieve tension and promote relaxation. Thoughtful design elements, from soft lighting to natural textures, create an environment that feels peaceful and restorative.

Whether you take a quiet moment by the pool or sink into the comfort of a massage chair, the spa is a place where residents can retreat from the everyday and reconnect with themselves. This carefully curated space embodies relaxation, offering a true sense of well-being.





A
serene
waterscape

GARDEN POOL

Nestled amidst lush greenery and facing the pristine beachfront, the garden pool at Ellington Cove is a tranquil retreat that offers breathtaking views of the sea. Surrounded by vibrant plants and shaded by swaying palms, this pool blends seamlessly with its natural surroundings.

Whether you're taking a leisurely swim or lounging on the deck with the sound of gentle waves in the background, the garden pool creates an atmosphere of peace and relaxation.

The interplay of greenery and the sparkling beachfront creates a setting that feels both intimate and expansive. Perfect for moments of solitude or shared enjoyment, this pool invites you to embrace the harmony of nature and the serenity of coastal living.



ETHEREAL



ESCAPE

LEISURE POOL

The leisure pool is a place to enjoy life's simple pleasures. With a spacious deck and inviting water, it's perfect for slow mornings, sunny afternoons, or laid-back evenings. Whether you're swimming laps, soaking in the calm atmosphere, or spending time with family and friends, this space caters to all your moods.

The pool's thoughtful design ensures a comfortable and welcoming environment, making it a favorite spot for both relaxation and social gatherings. Enhanced by its proximity to lush gardens and the serene beachfront, it's a setting that connects you to the beauty of Ellington Cove.

Here, the water becomes a sanctuary where every moment feels timeless and effortlessly enjoyable.





BEACH POOL

The beach pool brings the beauty of the sea directly to your doorstep. With its stunning proximity to the shoreline, this pool offers an unparalleled experience of blending poolside comfort with coastal charm.

Take in uninterrupted views of the water while enjoying the pool's inviting design, or relax in a lounge surrounded by the sounds of waves and the scent of the sea breeze. Whether you're looking for quiet moments alone or a space to connect with loved ones, the beach pool captures the essence of waterfront living in every detail.

As the day transitions, the changing hues of the sky reflect on the pool's surface, creating a magical ambiance. It's a space that invites you to embrace the rhythm of the sea while savoring the comfort and beauty of coastal living.



SOCIAL



COVE

BEACH CLUBHOUSE

The beach club is a vibrant hub where neighbors and friends can effortlessly come together. Its open design invites natural light and coastal breezes, creating an atmosphere that is both welcoming and elegant. Thoughtfully designed lounges offer cozy spaces to relax and connect, while the lounge bar provides a chic setting to enjoy refreshing drinks.

Whether for casual coffee mornings or lively evening gatherings, the beach club seamlessly adapts to every occasion, offering a dynamic and versatile space that enhances any lifestyle. With its stunning beachfront views, every moment spent here feels like a serene escape.





A
sunlit
horizon

CLUBHOUSE
TERRACE

The clubhouse terrace offers a front-row seat to the stunning views of the beach. Elevated above the shoreline, this spacious terrace combines modern design with natural beauty, providing a unique setting for both relaxation and celebration.

Imagine hosting an intimate dinner with friends as the sun sets, or simply enjoying a quiet moment as the horizon stretches endlessly before you. Every element of the terrace is designed to enhance the experience of living by the sea.

With the gentle sound of waves in the background and a soft breeze to accompany your time, the terrace offers a sensory escape. Whether day or night, it's a destination where tranquility and connection meet effortlessly.



LIFE BY



THE SEA

CLUB
LOUNGE

The club lounge offers the perfect backdrop to unwind after a day spent by the pool or beach. Its expansive lounge areas and elegant bar, bathed in natural light, create a serene yet sophisticated atmosphere. Designed to elevate everyday living, the space exudes a sense of exclusivity and comfort, with plush seating and meticulous detailing that reflect its premium character.

Whether enjoying a quiet moment with a refreshing drink or socializing with friends, the club lounge embodies a lifestyle of effortless refinement and elevated relaxation. With every detail thoughtfully curated, it promises an experience as indulgent as the setting itself.



COASTAL LIVING

COASTAL LIFE

THE COASTAL
SURF-UP!



A
colorful
space

KIDS PLAY

The kids' play area at Ellington Cove is a vibrant, beach-inspired space that encourages imagination and exploration. Designed with soft colors and playful elements like surfboards, beach balls, and gentle dunes, it feels like a miniature seaside escape.

This engaging environment caters to children of all ages, providing spaces for creative play. It's also a place where friendships are built, as kids interact and share adventures with others from the community.

Safe, welcoming, and filled with opportunities for fun, this play area ensures that young residents have a special space to create lasting memories. Parents can rest assured knowing their children are thriving in a space thoughtfully crafted to inspire joy and foster meaningful connections



RESIDENCES

A home
A seascape
A signature



A
refined
setting

LIVING ROOM

Your very own sanctuary on the shores of Dubai Islands. A living space inspired by the natural world on your doorstep, crafted with wellness in mind using high quality materials and meticulous attention to detail. Designed to blur the lines between indoors and outdoors, the residences feature expansive floor-to-ceiling windows that flood the interiors with natural light and showcase breathtaking sea views.

Each home is complemented by a generous balcony, inviting you to step out into the refreshing sea breeze whenever the mood strikes. Thoughtfully planned spaces and contemporary finishes come together to create a serene and sophisticated retreat, offering a lifestyle that balances tranquility and modern elegance.



CULINARY



NICHE

THE KITCHEN

Each kitchen is custom designed with contemporary cabinets and fitted with premium European brand appliances. Illuminated by warm ambient lighting, the space features elegant, sustainably crafted cabinets and opulent waterfall edge countertops. Perfectly positioned to frame stunning sea views, the kitchen is a refined space for creating culinary masterpieces or hosting intimate gatherings.

Every detail has been meticulously considered to ensure a seamless blend of style and functionality, elevating the art of cooking and dining.





A
haven of
comfort

THE BEDROOM

Each bedroom is a tranquil retreat, thoughtfully designed to combine comfort and sophistication. Expansive floor-to-ceiling windows frame sweeping views of the shoreline, inviting natural light to fill the space while connecting you to the serene surroundings.

Soft, muted tones and high-quality finishes create a soothing atmosphere, while ample storage and elegant design details ensure both functionality and style. Wake up to breathtaking vistas and unwind in a space that embodies peace and refinement.



SUBTLE



ELEGANCE

THE BATHROOM

Centered around a modern shower space with glass door partitions, the bathrooms are designed for both style and functionality. They feature sleek mirror cabinets with under-sink storage and concealed ambient lighting, while stone countertops provide a durable yet elegant surface for the sinks with contemporary faucets.

Porcelain floor and wall tiling enhance the clean and polished aesthetic, creating a refined and tranquil space. Thoughtfully crafted, the bathrooms offer a harmonious blend of comfort and practicality, ensuring a serene start and end to every day.





A vision of sophistication

THE PENTHOUSE

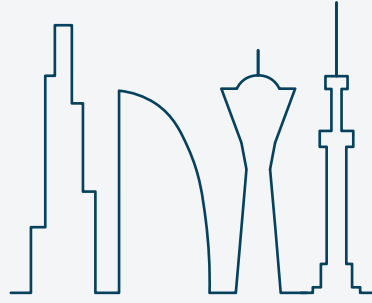
The penthouse is a masterpiece of design and sophistication, offering an expansive 4-bedroom layout that redefines contemporary living. Each room is thoughtfully curated with attention to detail, creating an atmosphere of elegance and comfort. The highlight of the penthouse is its private pool and spacious terrace, providing the ultimate space for relaxation and entertainment while enjoying uninterrupted panoramic views of the surrounding skyline and serene waters.

With its grand proportions, impeccable finishes, and seamless indoor outdoor flow, this residence stands as a sanctuary of elevated living, perfectly suited for those who appreciate the finest in life.









PREFERENCE
properties

PREFERENCE properties

info@preference.ae

Phone: +971509792375

WhatsApp: +971509792375

<https://preference.ae/>